

## Anti-E2F6 antibody (110-281) [S6MR] (STJ11101356)

### GENERAL INFORMATION

Product Type	Primary antibodies
Applications	WB/IP/ELISA/ChIP/CUT&Tag
Host / Source	Rabbit
Reactivity	Human

### PRODUCT PROPERTIES

Clonality	Monoclonal
Concentration	Lot specific
Conjugation	Unconjugated
Purification	Affinity purification
Dilution Range	WB:1:500-1:2000 IP:0.5 Mu g-4 Mu g antibody for 200 Mu g-400 Mu g extracts of whole cells ELISA:Recommended starting concentration is 1 Mu g/mL. Please optimize the concentration based on your specific assay requirements. ChIP:5 Mu g anti
Formulation	PBS with 0.02% Sodium Azide, 0.05% BSA, 50% Glycerol, pH 7.3.
Isotype	IgG
Molecular Weight	Protein Mw: 32kDa Observed Mw: 36kDa
Storage Instruction	Store at -20°C for up to 1 year from the date of receipt, and avoid repeat freeze-thaw cycles.

### TARGET INFORMATION

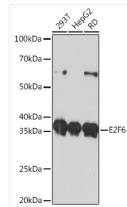
Gene ID	<a href="#">1876</a>
Gene Symbol	<a href="#">E2F6</a>
UniProt ID	<a href="#">E2F6_HUMAN</a>
Immunogen Region	110-281
Immunogen Sequence	LDGIDLVEKKSKNHIRWIGS DLSNFGAVPQQKKLQEELSD LSAMEDALDELKDCQAQLF ELTDDKENERLAYVTYQDIH SIQAFHEQIVIAVKAPAETR LDVPAPREDSITVHIRSTNG PIDVYLCEVEQGQTSNKRSE GVGTSSESTHPEGPEEEEN PQQSEELLEVSN
Specificity	Recombinant fusion protein containing a sequence corresponding to amino acids 110-281 of human E2F6 (NP_937987.2)

### ADDITIONAL INFORMATION

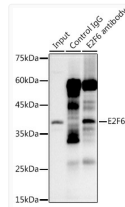
Note **STRICTLY FOR FURTHER SCIENTIFIC RESEARCH USE ONLY (RUO). MUST NOT TO BE USED IN DIAGNOSTIC OR THERAPEUTIC APPLICATIONS.**



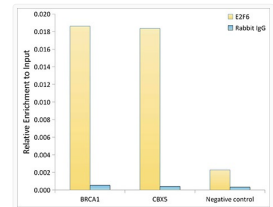
CUT&Tag was performed using the CUT&Tag Assay Kit (pAG-Tn5) for Illumina (RK20265) from 10<sup>8</sup> K562 cells with 1 Mu g E2F6 rabbit monoclonal antibody (STJ11101356), along with a Goat Anti-rabbit IgG (H+L). The CUT&Tag results indicate the enrichment pattern of E2F6 in representative gene loci (BRCA1), as shown in figure.



Western blot analysis of extracts of various cell lines, using E2F6 rabbit monoclonal antibody (STJ11101356) at 1:1000 dilution. Secondary antibody: HRP Goat Anti-rabbit IgG (H+L) (STJS000856) at 1:10000 dilution. Lysates/proteins: 25 Mu g per lane. Blocking buffer: 3% non-fat dry milk in TBST. Detection: ECL Basic Kit. Exposure time: 90s.



Immunoprecipitation analysis of 300 Mu g extracts of 293T cells using 3 Mu g E2F6 antibody (STJ11101356). Western blot was performed from the immunoprecipitate using E2F6 antibody (STJ11101356) at a dilution of 1:1000.



Chromatin immunoprecipitation analysis of extracts of 293T cells, using E2F6 antibody (STJ11101356) and rabbit IgG. The amount of immunoprecipitated DNA was checked by quantitative PCR. Histogram was constructed by the ratios of the immunoprecipitated DNA to the input.