

## Anti-LOX antibody (318-417) [S9MR] (STJ11101349)

### GENERAL INFORMATION

Product Type	Primary antibodies
Applications	WB/IHC-P/IP/ELISA
Host / Source	Rabbit
Reactivity	Human/Mouse/Rat

### PRODUCT PROPERTIES

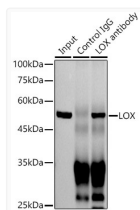
Clonality	Monoclonal
Concentration	Lot specific
Conjugation	Unconjugated
Purification	Affinity purification
Dilution Range	WB:1:1000-1:6000 IHC-P:1:200-1:2000 IP:0.5 Mu g-4 Mu g antibody for 200 Mu g-400 Mu g extracts of whole cells ELISA:Recommended starting concentration is 1 Mu g/mL. Please optimize the concentration based on your specific assay requiremen
Formulation	PBS with 0.02% Sodium Azide, 0.05% BSA, 50% Glycerol, pH 7.3.
Isotype	IgG
Molecular Weight	Protein Mw: 47kDa Observed Mw: 56kDa
Storage Instruction	Store at -20°C for up to 1 year from the date of receipt, and avoid repeat freeze-thaw cycles.

### TARGET INFORMATION

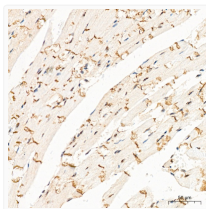
Gene ID	<a href="#">4015</a>
Gene Symbol	<a href="#">LOX</a>
UniProt ID	<a href="#">LYOX_HUMAN</a>
Immunogen Region	318-417
Immunogen Sequence	GHKASFCLEDTSCDYG YHRR FACTAHTQGLSPGCYDYGA DIDCQWIDITDVKPGNYILK VSVNPSYLVPESDYTTNNVVR CDIRYTGHHAYASGCTISPY
Specificity	A synthetic peptide corresponding to a sequence within amino acids 318-417 of human LOX (P28300).

### ADDITIONAL INFORMATION

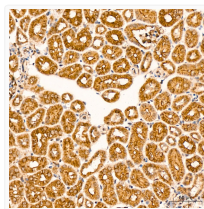
Note STRICTLY FOR FURTHER SCIENTIFIC RESEARCH USE ONLY (RUO). MUST NOT TO BE USED IN DIAGNOSTIC OR THERAPEUTIC APPLICATIONS.



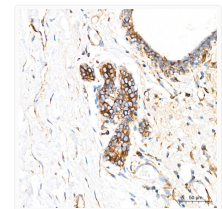
Immunoprecipitation analysis of 300 Mu g extracts of Jurkat cells using 3 Mu g LOX antibody (STJ11101349). Western blot was performed from the immunoprecipitate using LOX antibody (STJ11101349) at a dilution of 1:1000.



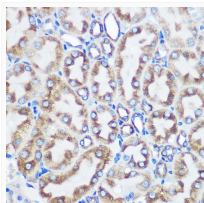
Immunohistochemistry analysis of LOX in paraffin-embedded rat heart tissue using LOX Rabbit monoclonal antibody (STJ11101349) at a dilution of 1:200 (40x lens). High pressure antigen retrieval was performed with 0.01 M citrate buffer (pH 6.0) prior to immunohistochemistry staining.



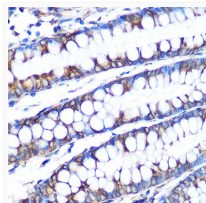
Immunohistochemistry analysis of LOX in paraffin-embedded mouse kidney tissue using LOX Rabbit monoclonal antibody (STJ11101349) at a dilution of 1:200 (40x lens). High pressure antigen retrieval was performed with 0.01 M citrate buffer (pH 6.0) prior to immunohistochemistry staining.



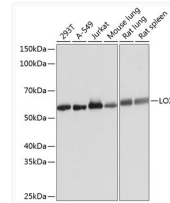
Immunohistochemistry analysis of LOX in paraffin-embedded human breast tissue using LOX Rabbit monoclonal antibody (STJ11101349) at a dilution of 1:200 (40x lens). High pressure antigen retrieval was performed with 0.01 M citrate buffer (pH 6.0) prior to immunohistochemistry staining.



Immunohistochemistry analysis of LOX in paraffin-embedded rat kidney using LOX Rabbit monoclonal antibody (STJ11101349) at dilution of 1:100 (40x lens). Perform microwave antigen retrieval with 10 mM PBS buffer pH 7.2 before commencing with immunohistochemistry staining protocol.



Immunohistochemistry analysis of LOX in paraffin-embedded human colon using LOX Rabbit monoclonal antibody (STJ11101349) at dilution of 1:100 (40x lens). Perform microwave antigen retrieval with 10 mM PBS buffer pH 7.2 before commencing with immunohistochemistry staining protocol.



Western blot analysis of various lysates using LOX Rabbit monoclonal antibody (STJ11101349) at 1:1000 dilution. Secondary antibody: HRP Goat Anti-Rabbit IgG (H+L) (STJS000856) at 1:10000 dilution. Lysates/proteins: 25 Mu g per lane. Blocking buffer: 3% nonfat dry milk in TBST. Detection: ECL Basic Kit. Exposure time: 1s.