

Anti-FGF2 antibody (100-200) [S4MR] (STJ11101344)

GENERAL INFORMATION

Product Type	Primary antibodies
Applications	WB/IHC-P/IF/ICC/ELISA
Host / Source	Rabbit
Reactivity	Human

PRODUCT PROPERTIES

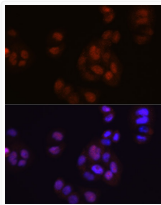
Clonality	Monoclonal
Concentration	Lot specific
Conjugation	Unconjugated
Purification	Affinity purification
Dilution Range	WB:1:1000-1:2000 IHC-P:1:200-1:2000 IF/ICC:1:50-1:200 ELISA:Recommended starting concentration is 1 µg/mL. Please optimize the concentration based on your specific assay requirements.
Formulation	PBS with 0.02% Sodium Azide, 0.05% BSA, 50% Glycerol, pH 7.3.
Isotype	IgG
Molecular Weight	Protein Mw: 31kDa Observed Mw: 18kDa/22kDa/31kDa
Storage Instruction	Store at -20°C for up to 1 year from the date of receipt, and avoid repeat freeze-thaw cycles.

TARGET INFORMATION

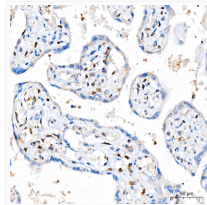
Gene ID	2247
Gene Symbol	FGF2
UniProt ID	FGF2_HUMAN
Immunogen Region	100-200
Immunogen Sequence	RAPERVGGRRGRGRGTAAPRA APAARGSRPAGTMAAGSI TTLPALPEDGGSGAFPPGHF KDPKRLYCKNGGFFLRIHPD GRVDGVREKSDPHIKLQLQA E
Specificity	A synthetic peptide corresponding to a sequence within amino acids 100-200 of human FGF2 (NP_001997.5).

ADDITIONAL INFORMATION

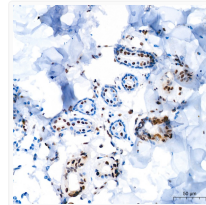
Note STRICTLY FOR FURTHER SCIENTIFIC RESEARCH USE ONLY (RUO). MUST NOT TO BE USED IN DIAGNOSTIC OR THERAPEUTIC APPLICATIONS.



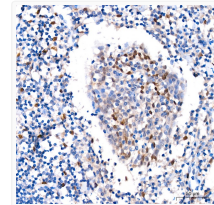
Immunofluorescence analysis of HeLa cells using FGF2 Rabbit monoclonal antibody (STJ11101344) at dilution of 1:100 (40x lens). Secondary antibody: Cy3 Goat Anti-Rabbit IgG (H+L) at 1:500 dilution. Blue: DAPI for nuclear staining.



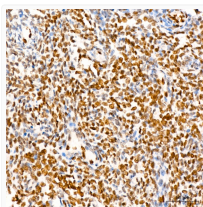
Immunohistochemistry analysis of FGF2 in paraffin-embedded human placenta tissue using FGF2 Rabbit monoclonal antibody (STJ11101344) at a dilution of 1:200 (40x lens). High pressure antigen retrieval was performed with 0.01 M citrate buffer (pH 6.0) prior to immunohistochemistry staining.



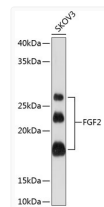
Immunohistochemistry analysis of FGF2 in paraffin-embedded human skin tissue using FGF2 Rabbit monoclonal antibody (STJ11101344) at a dilution of 1:200 (40x lens). High pressure antigen retrieval was performed with 0.01 M citrate buffer (pH 6.0) prior to immunohistochemistry staining.



Immunohistochemistry analysis of FGF2 in paraffin-embedded human tonsil tissue using FGF2 Rabbit monoclonal antibody (STJ11101344) at a dilution of 1:200 (40x lens). High pressure antigen retrieval was performed with 0.01 M citrate buffer (pH 6.0) prior to immunohistochemistry staining.



Immunohistochemistry analysis of FGF2 in paraffin-embedded human lung squamous carcinoma tissue using FGF2 Rabbit monoclonal antibody (STJ11101344) at dilution of 1:400 (40x lens). Perform high pressure antigen retrieval with 10 mM Tris/EDTA buffer pH 9.0 before commencing with immunohistochemistry staining protocol.



Western blot analysis of lysates from SKOV3 cells, using FGF2 Rabbit monoclonal antibody (STJ11101344) at 1:1000 dilution. Secondary antibody: HRP Goat Anti-Rabbit IgG (H+L) (STJS000856) at 1:10000 dilution. Lysates/proteins: 25 µg per lane. Blocking buffer: 3% nonfat dry milk in TBST. Detection: ECL Basic Kit. Exposure time: 60s.