

Anti-CES1 antibody (1-100) [S0MR] (STJ11101340)

GENERAL INFORMATION

Product Type	Primary antibodies
Applications	WB/IF/ICC/ELISA
Host / Source	Rabbit
Reactivity	Human/Mouse/Rat

PRODUCT PROPERTIES

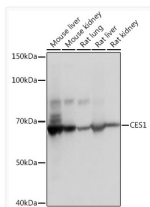
Clonality	Monoclonal
Concentration	Lot specific
Conjugation	Unconjugated
Purification	Affinity purification
Dilution Range	WB:1:1000-1:6000 IF/CC:1:100-1:1000 ELISA:Recommended starting concentration is 1 µg/mL. Please optimize the concentration based on your specific assay requirements.
Formulation	PBS with 0.02% Sodium Azide, 0.05% BSA, 50% Glycerol, pH 7.3.
Isotype	IgG
Molecular Weight	Protein Mw: 63kDa Observed Mw: 63kDa
Storage Instruction	Store at -20°C for up to 1 year from the date of receipt, and avoid repeat freeze-thaw cycles.

TARGET INFORMATION

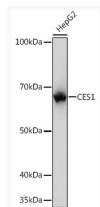
Gene ID	1066
Gene Symbol	CES1
UniProt ID	EST1_HUMAN
Immunogen Region	1-100
Immunogen Sequence	MWLRAFILATLSASAAWGHP SSPPVVDTVHGKVLGKFVSL EGFAQPVAIFLGIPFAKPPL GPLRFTPPQPAEPWSFVKNA TSYPMPCTQDPKAGQLLSEL
Specificity	A synthetic peptide corresponding to a sequence within amino acids 1-100 of human CES1 (P23141).

ADDITIONAL INFORMATION

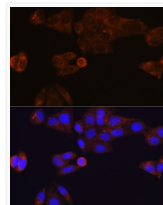
Note **STRICTLY FOR FURTHER SCIENTIFIC RESEARCH USE ONLY (RUO). MUST NOT TO BE USED IN DIAGNOSTIC OR THERAPEUTIC APPLICATIONS.**



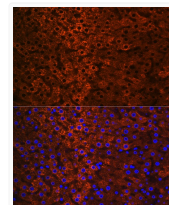
Western blot analysis of extracts of various cell lines, using CES1 rabbit monoclonal antibody (STJ11101340) at 1:1000 dilution. Secondary antibody: HRP Goat Anti-rabbit IgG (H+L) (STJS000856) at 1:10000 dilution. Lysates/proteins: 25 µg per lane. Blocking buffer: 3% non-fat dry milk in TBST. Detection: ECL Basic Kit. Exposure time: 1s.



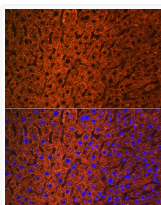
Western blot analysis of extracts of HepG2 cells, using CES1 rabbit monoclonal antibody (STJ11101340) at 1:1000 dilution. Secondary antibody: HRP Goat Anti-rabbit IgG (H+L) (STJS000856) at 1:10000 dilution. Lysates/proteins: 25 µg per lane. Blocking buffer: 3% non-fat dry milk in TBST. Detection: ECL Basic Kit. Exposure time: 1s.



Immunofluorescence analysis of HeLa using CES1 rabbit monoclonal antibody (STJ11101340) at dilution of 1:100 (40x lens). Blue: DAPI for nuclear staining.



Immunofluorescence analysis of rat liver using CES1 rabbit monoclonal antibody (STJ11101340) at dilution of 1:100 (40x lens). Blue: DAPI for nuclear staining.



Immunofluorescence analysis of mouse liver using CES1 rabbit monoclonal antibody (STJ11101340) at dilution of 1:100 (40x lens). Blue: DAPI for nuclear staining.