

Anti-MCM3 antibody (1-100) [S8MR] (STJ11101338)

GENERAL INFORMATION

Product Type	Primary antibodies
Applications	WB/IHC-P/IF/ICC/IP/ELISA
Host / Source	Rabbit
Reactivity	Human/Mouse/Rat

PRODUCT PROPERTIES

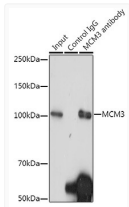
Clonality	Monoclonal
Concentration	Lot specific
Conjugation	Unconjugated
Purification	Affinity purification
Dilution Range	WB:1:500-1:1000 IHC-P:1:50-1:200 IF/CC:1:50-1:200 IP:0.5 Mu g-4 Mu g antibody for 200 Mu g-400 Mu g extracts of whole cells ELISA:Recommended starting concentration is 1 Mu g/mL. Please optimize the concentration based on your specif
Formulation	PBS with 0.02% Sodium Azide, 0.05% BSA, 50% Glycerol, pH 7.3.
Isotype	IgG
Molecular Weight	Protein Mw: 91kDa Observed Mw: 100kDa
Storage Instruction	Store at -20°C for up to 1 year from the date of receipt, and avoid repeat freeze-thaw cycles.

TARGET INFORMATION

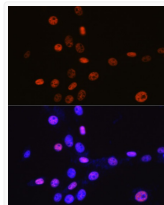
Gene ID	4172
Gene Symbol	MCM3
UniProt ID	MCM3_HUMAN
Immunogen Region	1-100
Immunogen Sequence	MAGTVVLDDELREARQDYLDLDFDEEDQGIYQSKVRELI SDNQYRLIVNVNDLRRKNEK RANRLNNAFEELVAFQRAL KDFVASIDATYAKQYEEFYV
Specificity	A synthetic peptide corresponding to a sequence within amino acids 1-100 of human MCM3 (P25205).

ADDITIONAL INFORMATION

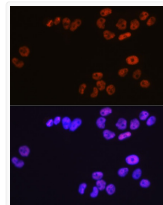
Note **STRICTLY FOR FURTHER SCIENTIFIC RESEARCH USE ONLY (RUO). MUST NOT TO BE USED IN DIAGNOSTIC OR THERAPEUTIC APPLICATIONS.**



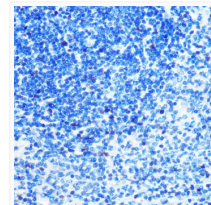
Immunoprecipitation analysis of 300 Mu g extracts of HeLa cells using 3 Mu g MCM3 antibody (STJ11101338). Western blot was performed from the immunoprecipitate using MCM3 antibody (STJ11101338) at a dilution of 1:1000.



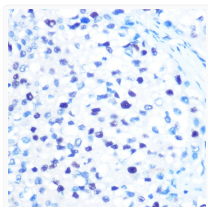
Immunofluorescence analysis of NIH-3T3 cells using MCM3 Rabbit monoclonal antibody (STJ11101338) at dilution of 1:100 (40x lens). Secondary antibody: Cy3 Goat Anti-Rabbit IgG (H+L) at 1:500 dilution. Blue: DAPI for nuclear staining.



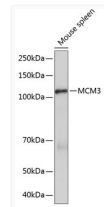
Immunofluorescence analysis of HeLa cells using MCM3 Rabbit monoclonal antibody (STJ11101338) at dilution of 1:100 (40x lens). Secondary antibody: Cy3 Goat Anti-Rabbit IgG (H+L) at 1:500 dilution. Blue: DAPI for nuclear staining.



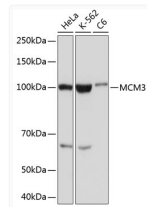
Immunohistochemistry analysis of MCM3 in paraffin-embedded rat spleen using MCM3 Rabbit monoclonal antibody (STJ11101338) at dilution of 1:100 (40x lens). Perform microwave antigen retrieval with 10 mM PBS buffer pH 7.2 before commencing with immunohistochemistry staining protocol.



Immunohistochemistry analysis of MCM3 in paraffin-embedded human liver cancer using MCM3 Rabbit monoclonal antibody (STJ11101338) at dilution of 1:100 (40x lens). Perform microwave antigen retrieval with 10 mM PBS buffer pH 7.2 before commencing with immunohistochemistry staining protocol.



Western blot analysis of lysates from Mouse spleen, using MCM3 Rabbit monoclonal antibody (STJ11101338) at 1:1000 dilution. Secondary antibody: HRP Goat Anti-Rabbit IgG (H+L) (STJS000856) at 1:10000 dilution. Lysates/proteins: 25 Mu g per lane. Blocking buffer: 3% nonfat dry milk in TBST. Detection: ECL Enhanced Kit. Exposure time: 3min.



Western blot analysis of various lysates using MCM3 Rabbit monoclonal antibody (STJ11101338) at 1:1000 dilution. Secondary antibody: HRP Goat Anti-Rabbit IgG (H+L) (STJS000856) at 1:10000 dilution. Lysates/proteins: 25 Mu g per lane. Blocking buffer: 3% nonfat dry milk in TBST. Detection: ECL Basic Kit. Exposure time: 10s.