

Anti-CDK1 antibody (198-297) [S8MR] (STJ11101328)

GENERAL INFORMATION

Product Type	Primary antibodies
Applications	WB/IF/ICC/IP/ELISA
Host / Source	Rabbit
Reactivity	Human/Mouse

PRODUCT PROPERTIES

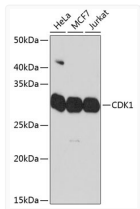
Clonality	Monoclonal
Concentration	Lot specific
Conjugation	Unconjugated
Purification	Affinity purification
Dilution Range	WB:1:1000-1:2000 IF/CC:1:50-1:200 IP:0.5 Mu g-4 Mu g antibody for 200 Mu g-400 Mu g extracts of whole cells ELISA:Recommended starting concentration is 1 Mu g/mL. Please optimize the concentration based on your specific assay requirement
Formulation	PBS with 0.05% Proclin300, 0.05% BSA, 50% Glycerol, pH 7.3.
Isotype	IgG
Molecular Weight	Protein Mw: 34kDa Observed Mw: 34kDa
Storage Instruction	Store at -20°C for up to 1 year from the date of receipt, and avoid repeat freeze-thaw cycles.

TARGET INFORMATION

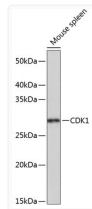
Gene ID	983
Gene Symbol	CDK1
UniProt ID	CDK1_HUMAN
Immunogen Region	198-297
Immunogen Sequence	ATKKPLFHGDSEIDQLFRIF RALGTPNNEVWPEVESLQDY KNTFPKWKPGSLASHVKNLDELNDLLSKMLIYDPAKRIS GKMALNHPYFNDLNDNQIKKM
Specificity	A synthetic peptide corresponding to a sequence within amino acids 198-297 of human CDK1 (NP_001777.1).

ADDITIONAL INFORMATION

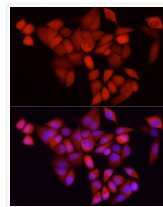
Note STRICTLY FOR FURTHER SCIENTIFIC RESEARCH USE ONLY (RUO). MUST NOT TO BE USED IN DIAGNOSTIC OR THERAPEUTIC APPLICATIONS.



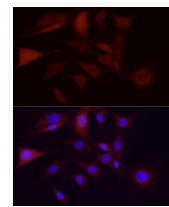
Western blot analysis of extracts of various cell lines, using CDK1 rabbit monoclonal antibody (STJ11101328) at 1:1000 dilution. Secondary antibody: HRP Goat Anti-rabbit IgG (H+L) (STJS000856) at 1:10000 dilution. Lysates/proteins: 25 Mu g per lane. Blocking buffer: 3% non-fat dry milk in TBST. Detection: ECL Basic Kit. Exposure time: 90s.



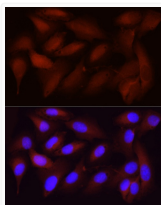
Western blot analysis of extracts of mouse spleen, using CDK1 rabbit monoclonal antibody (STJ11101328) at 1:1000 dilution. Secondary antibody: HRP Goat Anti-rabbit IgG (H+L) (STJS000856) at 1:10000 dilution. Lysates/proteins: 25 Mu g per lane. Blocking buffer: 3% non-fat dry milk in TBST. Detection: ECL Basic Kit. Exposure time: 3min.



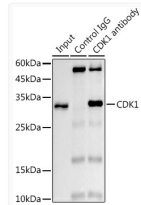
Immunofluorescence analysis of HeLa using CDK1 rabbit monoclonal antibody (STJ11101328) at dilution of 1:100 (40x lens). Blue: DAPI for nuclear staining.



Immunofluorescence analysis of NIH/3T3 using CDK1 rabbit monoclonal antibody (STJ11101328) at dilution of 1:100 (40x lens). Blue: DAPI for nuclear staining.



Immunofluorescence analysis of U2OS using CDK1 rabbit monoclonal antibody (STJ11101328) at dilution of 1:100 (40x lens). Blue: DAPI for nuclear staining.



Immunoprecipitation analysis of 300 Mu g extracts of 293T cells using 3 Mu g CDK1 antibody (STJ11101328). Western blot was performed from the immunoprecipitate using CDK1 antibody (STJ11101328) at a dilution of 1:1000.