

## Anti-GOLGA2 antibody (1-100) [S5MR] (STJ11101325)

### GENERAL INFORMATION

Product Type	Primary antibodies
Applications	WB/IHC-P/IF/ICC/ELISA
Host / Source	Rabbit
Reactivity	Human/Mouse/Rat

### PRODUCT PROPERTIES

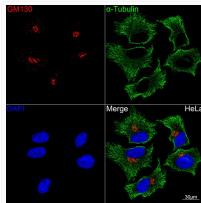
Clonality	Monoclonal
Concentration	Lot specific
Conjugation	Unconjugated
Purification	Affinity purification
Dilution Range	WB:1:1000-1:6000 IHC-P:1:200-1:2000 IF/ICC:1:100-1:2000 ELISA:Recommended starting concentration is 1 Mu g/mL. Please optimize the concentration based on your specific assay requirements.
Formulation	PBS with 0.02% Sodium Azide, 0.05% BSA, 50% Glycerol, pH 7.3.
Isotype	IgG
Molecular Weight	Protein Mw: 113kDa Observed Mw: 130kDa
Storage Instruction	Store at -20°C for up to 1 year from the date of receipt, and avoid repeat freeze-thaw cycles.

### TARGET INFORMATION

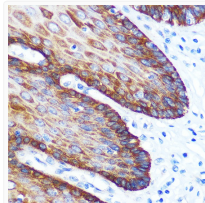
Gene ID	<a href="#">2801</a>
Gene Symbol	<a href="#">GOLGA2</a>
UniProt ID	<a href="#">GOGA2_HUMAN</a>
Immunogen Region	1-100
Immunogen Sequence	MWPQPRLPFRPAMSEETRQS KLAAAKKKLEYYQQRNSPGV PTGAKKKKKIKNGSNPETTT SGGCHSPEDTPKDNAATLQP SDDTVLPGGVSPGASLTSM
Specificity	A synthetic peptide corresponding to a sequence within amino acids 1-100 of human GM130 (Q08379).

### ADDITIONAL INFORMATION

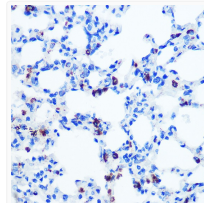
Note STRICTLY FOR FURTHER SCIENTIFIC RESEARCH USE ONLY (RUO). MUST NOT TO BE USED IN DIAGNOSTIC OR THERAPEUTIC APPLICATIONS.



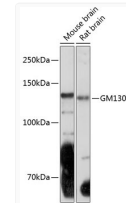
Confocal imaging of HeLa cells using GM130 Rabbit monoclonal antibody (STJ11101325, dilution 1:100) (Red). The cells were counterstained with Alpha-Tubulin Mouse monoclonal antibody ( dilution 1:200) (Green). DAPI was used for nuclear staining (blue). Objective: 60x.



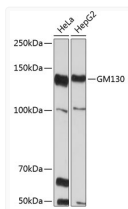
Immunohistochemistry analysis of GM130 in paraffin-embedded human esophageal tissue using GM130 Rabbit monoclonal antibody (STJ11101325) at dilution of 1:100 (40x lens). Perform microwave antigen retrieval with 10 mM PBS buffer pH 7. 2 before commencing with immunohistochemistry staining protocol.



Immunohistochemistry analysis of GM130 in paraffin-embedded rat lung using GM130 Rabbit monoclonal antibody (STJ11101325) at dilution of 1:100 (40x lens). Perform microwave antigen retrieval with 10 mM PBS buffer pH 7. 2 before commencing with immunohistochemistry staining protocol.



Western blot analysis of various lysates using GM130 Rabbit monoclonal antibody (STJ11101325) at 1: 1000 dilution. Secondary antibody: HRP Goat Anti-Rabbit IgG (H+L) (STJS000856) at 1:10000 dilution. Lysates/proteins: 25 Mu g per lane. Blocking buffer: 3% nonfat dry milk in TBST. Detection: ECL Basic Kit. Exposure time: 3min.



Western blot analysis of various lysates using GM130 Rabbit monoclonal antibody (STJ11101325) at 1: 1000 dilution. Secondary antibody: HRP Goat Anti-Rabbit IgG (H+L) (STJS000856) at 1:10000 dilution. Lysates/proteins: 25 Mu g per lane. Blocking buffer: 3% nonfat dry milk in TBST. Detection: ECL Basic Kit. Exposure time: 10s.