

Anti-HLA-A antibody (1-100) [S4MR] (STJ11101324)

GENERAL INFORMATION

Product Type	Primary antibodies
Applications	WB/IHC-P/ELISA
Host / Source	Rabbit
Reactivity	Human

PRODUCT PROPERTIES

Clonality	Monoclonal
Concentration	Lot specific
Conjugation	Unconjugated
Purification	Affinity purification
Dilution Range	WB:1:1000-1:6000 IHC-P:1:200-1:2000 ELISA:Recommended starting concentration is 1 μ g/mL. Please optimize the concentration based on your specific assay requirements.
Formulation	PBS with 0.02% Sodium Azide, 0.05% BSA, 50% Glycerol, pH 7.3.
Isotype	IgG
Molecular Weight	Protein Mw: 41kDa Observed Mw: 41kDa
Storage Instruction	Store at -20°C for up to 1 year from the date of receipt, and avoid repeat freeze-thaw cycles.

TARGET INFORMATION

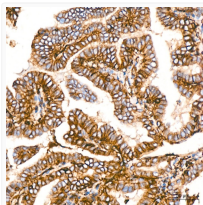
Gene ID	3105
Gene Symbol	HLA-A
UniProt ID	HLAA_HUMAN
Immunogen Region	1-100
Immunogen Sequence	MAVMAPRTLIIIIISGALALT QTWAGSHSMRYFFTSVSRPG RGEPRFIAVGYVDDTQFVRF DSDAASQRMEPRAPWIEQEG PEYWDQETRNVKQASQTRDV
Specificity	A synthetic peptide corresponding to a sequence within amino acids 1-100 of human HLA-A (P04439).

ADDITIONAL INFORMATION

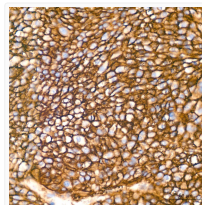
Note STRICTLY FOR FURTHER SCIENTIFIC RESEARCH USE ONLY (RUO). MUST NOT TO BE USED IN DIAGNOSTIC OR THERAPEUTIC APPLICATIONS.



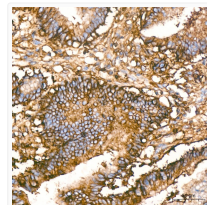
Immunohistochemistry analysis of HLA-A in paraffin-embedded human stomach tissue using HLA-A Rabbit monoclonal antibody (STJ11101324) at a dilution of 1:200 (40x lens). High pressure antigen retrieval was performed with 0.01 M citrate buffer (pH 6.0) prior to immunohistochemistry staining.



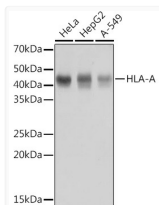
Immunohistochemistry analysis of HLA-A in paraffin-embedded human thyroid cancer tissue using HLA-A Rabbit monoclonal antibody (STJ11101324) at a dilution of 1:200 (40x lens). High pressure antigen retrieval was performed with 0.01 M citrate buffer (pH 6.0) prior to immunohistochemistry staining.



Immunohistochemistry analysis of HLA-A in paraffin-embedded human liver cancer tissue using HLA-A Rabbit monoclonal antibody (STJ11101324) at a dilution of 1:200 (40x lens). High pressure antigen retrieval was performed with 0.01 M citrate buffer (pH 6.0) prior to immunohistochemistry staining.



Immunohistochemistry analysis of HLA-A in paraffin-embedded human colon carcinoma tissue using HLA-A Rabbit monoclonal antibody (STJ11101324) at a dilution of 1:200 (40x lens). High pressure antigen retrieval was performed with 0.01 M citrate buffer (pH 6.0) prior to immunohistochemistry staining.



Western blot analysis of various lysates using HLA-A Rabbit monoclonal antibody (STJ11101324) at 1:1000 dilution. Secondary antibody: HRP Goat Anti-Rabbit IgG (H+L) (STJS000856) at 1:10000 dilution. Lysates/proteins: 25 μ g per lane. Blocking buffer: 3% nonfat dry milk in TBST. Detection: ECL Basic Kit. Exposure time: 1s.