

## Anti-CTNND1 antibody (869-968) [S2MR] (STJ11101322)

### GENERAL INFORMATION

Product Type	Primary antibodies
Applications	WB/IHC-P/IP/ELISA
Host / Source	Rabbit
Reactivity	Human/Mouse/Rat

### PRODUCT PROPERTIES

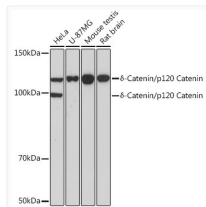
Clonality	Monoclonal
Concentration	Lot specific
Conjugation	Unconjugated
Purification	Affinity purification
Dilution Range	WB:1:500-1:1000 IHC-P:1:50-1:200 IP:0.5 Mu g-4 Mu g antibody for 400 Mu g-600 Mu g extracts of whole cells ELISA:Recommended starting concentration is 1 Mu g/mL. Please optimize the concentration based on your specific assay requirements.
Formulation	PBS with 0.02% Sodium Azide, 0.05% BSA, 50% Glycerol, pH 7.3.
Isotype	IgG
Molecular Weight	Protein Mw: 108kDa Observed Mw: 100kDa/110kDa
Storage Instruction	Store at -20°C for up to 1 year from the date of receipt, and avoid repeat freeze-thaw cycles.

### TARGET INFORMATION

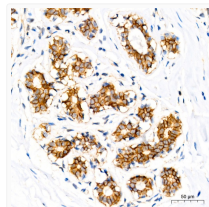
Gene ID	<a href="#">1500</a>
Gene Symbol	<a href="#">CTNND1</a>
UniProt ID	<a href="#">CTND1_HUMAN</a>
Immunogen Region	869-968
Immunogen Sequence	TLPLIDRNQKSDKKPDREEI QMSNMGSNTKSLDNNYSTPN ERGDHNRTLDRSGDLGDMEP LKGTTPLMQDEGQESLEEL DLVLVDDEGGQVSYPSMQKI
Specificity	A synthetic peptide corresponding to a sequence within amino acids 869-968 of human Delta-Catenin/p120 Catenin (O60716).

### ADDITIONAL INFORMATION

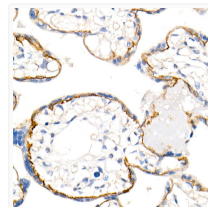
Note **STRICTLY FOR FURTHER SCIENTIFIC RESEARCH USE ONLY (RUO). MUST NOT TO BE USED IN DIAGNOSTIC OR THERAPEUTIC APPLICATIONS.**



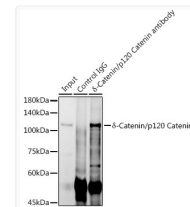
Western blot analysis of extracts of various cell lines, using Delta-Catenin/p120 Catenin rabbit monoclonal antibody (STJ11101322) at 1:1000 dilution. Secondary antibody: HRP Goat Anti-rabbit IgG (H+L) (STJS000856) at 1:10000 dilution. Lysates/proteins: 25 Mu g per lane. Blocking buffer: 3% non-fat dry milk in TBST. Detection: ECL Basic Kit. Exposure time: 3min.



Immunohistochemistry analysis of paraffin-embedded human breast using Delta-Catenin/p120 Catenin rabbit monoclonal antibody (STJ11101322) at dilution of 1:100 (40x lens). Perform high pressure antigen retrieval with 10 mM Tris/EDTA buffer pH 9. 0 before commencing with immunohistochemistry staining protocol.



Immunohistochemistry analysis of paraffin-embedded human placenta using Delta-Catenin/p120 Catenin rabbit monoclonal antibody (STJ11101322) at dilution of 1:100 (40x lens). Perform high pressure antigen retrieval with 10 mM Tris/EDTA buffer pH 9. 0 before commencing with immunohistochemistry staining protocol.



Immunoprecipitation analysis of 600 Mu g extracts of mouse testis cells using 3 Mu g Delta-Catenin/p120 Catenin antibody (STJ11101322). Western blot was performed from the immunoprecipitate using Delta-Catenin/p120 Catenin antibody (STJ11101322) at a dilution of 1:1000.