

Anti-ACE antibody (1200-1306) [S6MR] (STJ11101316)

GENERAL INFORMATION

Product Type	Primary antibodies
Applications	WB/IP/ELISA
Host / Source	Rabbit
Reactivity	Mouse/Rat

PRODUCT PROPERTIES

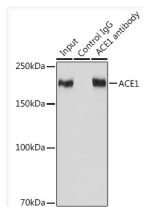
Clonality	Monoclonal
Concentration	Lot specific
Conjugation	Unconjugated
Purification	Affinity purification
Dilution Range	WB:1:500-1:1000 IP:0.5 Mu g-4 Mu g antibody for 400 Mu g-600 Mu g extracts of whole cells ELISA:Recommended starting concentration is 1 Mu g/mL. Please optimize the concentration based on your specific assay requirements.
Formulation	PBS with 0.02% Sodium Azide, 0.05% BSA, 50% Glycerol, pH 7.3.
Isotype	IgG
Molecular Weight	Protein Mw: 150kDa Observed Mw: 170kDa
Storage Instruction	Store at -20°C for up to 1 year from the date of receipt, and avoid repeat freeze-thaw cycles.

TARGET INFORMATION

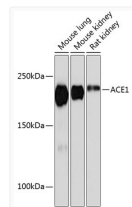
Gene ID	1636
Gene Symbol	ACE
UniProt ID	ACE_HUMAN
Immunogen Region	1200-1306
Immunogen Sequence	YFKPLLDWLRTENELHGEKL GWPQYNWTPNSARSEGPLPD SGRVSVFLGLDLDAQQARVGG WLLLFLGIALLVATLGLSQR LFSIRHRSLHRHSHGPGQFGS EVELRHS
Specificity	A synthetic peptide corresponding to a sequence within amino acids 1200-1306 of human ACE1 (P12821).

ADDITIONAL INFORMATION

Note **STRICTLY FOR FURTHER SCIENTIFIC RESEARCH USE ONLY (RUO). MUST NOT TO BE USED IN DIAGNOSTIC OR THERAPEUTIC APPLICATIONS.**



Immunoprecipitation analysis of 600 Mu g extracts of Mouse kidney cells using 3 Mu g ACE1 antibody (STJ11101316). Western blot was performed from the immunoprecipitate using ACE1 antibody (STJ11101316) at a dilution of 1:1000.



Western blot analysis of various lysates using ACE1 Rabbit monoclonal antibody (STJ11101316) at 1:1000 dilution. Secondary antibody: HRP Goat Anti-Rabbit IgG (H+L) (STJS000856) at 1:10000 dilution. Lysates/proteins: 25 Mu g per lane. Blocking buffer: 3% nonfat dry milk in TBST. Detection: ECL Basic Kit. Exposure time: 30s.