

Anti-C1QBP antibody (100-200) [S9MR] (STJ11101309)

GENERAL INFORMATION

Product Type	Primary antibodies
Applications	WB/IHC-P/ELISA
Host / Source	Rabbit
Reactivity	Human/Mouse/Rat

PRODUCT PROPERTIES

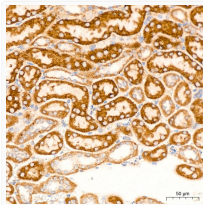
Clonality	Monoclonal
Concentration	Lot specific
Conjugation	Unconjugated
Purification	Affinity purification
Dilution Range	WB:1:500-1:1000 IHC-P:1:50-1:200 ELISA:Recommended starting concentration is 1 Mu g/mL. Please optimize the concentration based on your specific assay requirements.
Formulation	PBS with 0.02% Sodium Azide, 0.05% BSA, 50% Glycerol, pH 7.3.
Isotype	IgG
Molecular Weight	Protein Mw: 31kDa Observed Mw: 33kDa
Storage Instruction	Store at -20°C for up to 1 year from the date of receipt, and avoid repeat freeze-thaw cycles.

TARGET INFORMATION

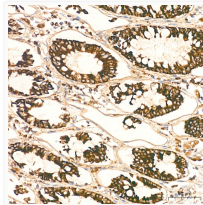
Gene ID	708
Gene Symbol	C1QBP
UniProt ID	C1QBP_HUMAN
Immunogen Region	100-200
Immunogen Sequence	KTLPKMSGGWLELNGTEAK LVRKVAGEKITVTFNINNSI PPTFDGEEEPSQGGKVEEQE PELTSTPNFVVEVIKNDGK KALVLDCHYPEDEVGQEDEA E
Specificity	A synthetic peptide corresponding to a sequence within amino acids 100-200 of human GC1q R/C1QBP (Q07021).

ADDITIONAL INFORMATION

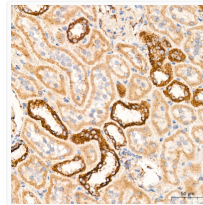
Note STRICTLY FOR FURTHER SCIENTIFIC RESEARCH USE ONLY (RUO). MUST NOT TO BE USED IN DIAGNOSTIC OR THERAPEUTIC APPLICATIONS.



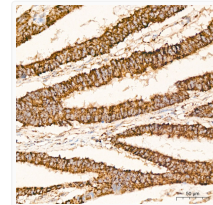
Immunohistochemistry analysis of GC1q R/C1QBP in paraffin-embedded mouse kidney tissue using GC1q R/C1QBP Rabbit monoclonal antibody (STJ11101309) at a dilution of 1:200 (40x lens). High pressure antigen retrieval was performed with 0.01 M citrate buffer (pH 6.0) prior to immunohistochemistry staining.



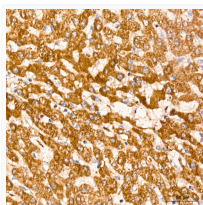
Immunohistochemistry analysis of GC1q R/C1QBP in paraffin-embedded human colon tissue using GC1q R/C1QBP Rabbit monoclonal antibody (STJ11101309) at a dilution of 1:200 (40x lens). High pressure antigen retrieval was performed with 0.01 M citrate buffer (pH 6.0) prior to immunohistochemistry staining.



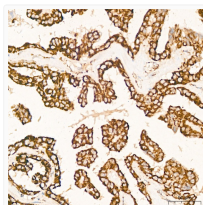
Immunohistochemistry analysis of GC1q R/C1QBP in paraffin-embedded rat kidney tissue using GC1q R/C1QBP Rabbit monoclonal antibody (STJ11101309) at a dilution of 1:200 (40x lens). High pressure antigen retrieval was performed with 0.01 M citrate buffer (pH 6.0) prior to immunohistochemistry staining.



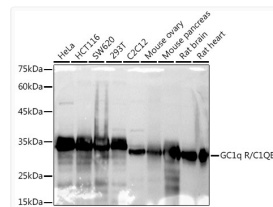
Immunohistochemistry analysis of GC1q R/C1QBP in paraffin-embedded human colon carcinoma tissue using GC1q R/C1QBP Rabbit monoclonal antibody (STJ11101309) at a dilution of 1:200 (40x lens). High pressure antigen retrieval was performed with 0.01 M citrate buffer (pH 6.0) prior to immunohistochemistry staining.



Immunohistochemistry analysis of GC1q R/C1QBP in paraffin-embedded human liver tissue using GC1q R/C1QBP Rabbit monoclonal antibody (STJ11101309) at a dilution of 1:200 (40x lens). High pressure antigen retrieval was performed with 0.01 M citrate buffer (pH 6.0) prior to immunohistochemistry staining.



Immunohistochemistry analysis of GC1q R/C1QBP in paraffin-embedded human thyroid cancer tissue using GC1q R/C1QBP Rabbit monoclonal antibody (STJ11101309) at a dilution of 1:200 (40x lens). High pressure antigen retrieval was performed with 0.01 M citrate buffer (pH 6.0) prior to immunohistochemistry staining.



Western blot analysis of various lysates using GC1q R/C1QBP Rabbit monoclonal antibody (STJ11101309) at 1:1000 dilution. Secondary antibody: HRP Goat Anti-Rabbit IgG (H+L) (STJS000856) at 1:10000 dilution. Lysates/proteins: 25 Mu g per lane. Blocking buffer: 3% nonfat dry milk in TBST. Detection: ECL Basic Kit. Exposure time: 10s.