

Anti-FTL antibody (1-175) [S2MR] (STJ11101302)

GENERAL INFORMATION

Product Type	Primary antibodies
Applications	WB/IHC-P/ELISA
Host / Source	Rabbit
Reactivity	Human/Mouse/Rat

PRODUCT PROPERTIES

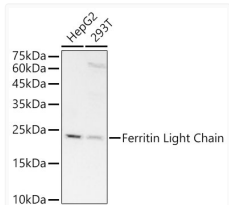
Clonality	Monoclonal
Concentration	Lot specific
Conjugation	Unconjugated
Purification	Affinity purification
Dilution Range	WB:1:2000-1:9000 IHC-P:1:400-1:2000 ELISA:Recommended starting concentration is 1 Mu g/mL. Please optimize the concentration based on your specific assay requirements.
Formulation	PBS with 0.09% Sodium Azide, 0.05% BSA, 50% Glycerol, pH7.3.
Isotype	IgG
Molecular Weight	Protein Mw: 20kDa Observed Mw: 20kDa
Storage Instruction	Store at -20°C for up to 1 year from the date of receipt, and avoid repeat freeze-thaw cycles.

TARGET INFORMATION

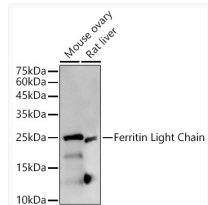
Gene ID	2512
Gene Symbol	FTL
UniProt ID	FRIL_HUMAN
Immunogen Region	1-175
Immunogen Sequence	MSSQIRQNYSTDVEAAVNSL VNLYLQASYTYLSLGFYFDR DDVALEGVSHFFRELAEEKR EGYERLLKMQNQRGGRALFQ DIKKPAEDEWGTKPDAMKAA MALEKKNQALLDLHALGSA RTDPHLCDFLETHFLDDEEVK LIKKMGDHLTNLHRLGGPEA GLGEYLFERLTLKHD
Specificity	Recombinant fusion protein containing a sequence corresponding to amino acids 1-175 of human Ferritin Light Chain (NP_000137.2).

ADDITIONAL INFORMATION

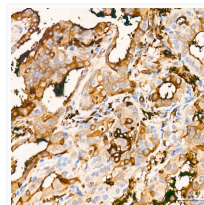
Note **STRICTLY FOR FURTHER SCIENTIFIC RESEARCH USE ONLY (RUO). MUST NOT TO BE USED IN DIAGNOSTIC OR THERAPEUTIC APPLICATIONS.**



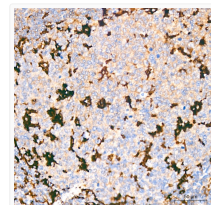
Western blot analysis of various lysates, using Ferritin Light Chain antibody (STJ11101302) at 1:8000 dilution. Secondary antibody: HRP Goat Anti-rabbit IgG (H+L) (STJS000856) at 1:10000 dilution. Lysates/proteins: 25 Mu g per lane. Blocking buffer: 3% non-fat dry milk in TBST. Detection: ECL Basic Kit. Exposure time: 180s.



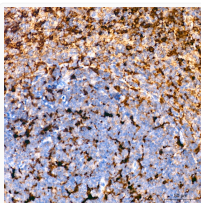
Western blot analysis of various lysates, using Ferritin Light Chain antibody (STJ11101302) at 1:8000 dilution. Secondary antibody: HRP Goat Anti-rabbit IgG (H+L) (STJS000856) at 1:10000 dilution. Lysates/proteins: 25 Mu g per lane. Blocking buffer: 3% non-fat dry milk in TBST. Detection: ECL Basic Kit. Exposure time: 20s.



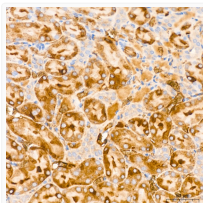
Immunohistochemistry analysis of Ferritin Light Chain in paraffin-embedded human thyroid tissue using Ferritin Light Chain rabbit monoclonal antibody (STJ11101302) at a dilution of 1:400 (40x lens). High pressure antigen retrieval was performed with 0.01 M citrate buffer (pH 6.0) prior to immunohistochemistry staining.



Immunohistochemistry analysis of Ferritin Light Chain in paraffin-embedded human tonsil tissue using Ferritin Light Chain rabbit monoclonal antibody (STJ11101302) at a dilution of 1:400 (40x lens). High pressure antigen retrieval was performed with 0.01 M citrate buffer (pH 6.0) prior to immunohistochemistry staining.



Immunohistochemistry analysis of Ferritin Light Chain in paraffin-embedded mouse spleen tissue using Ferritin Light Chain rabbit monoclonal antibody (STJ11101302) at a dilution of 1:400 (40x lens). High pressure antigen retrieval was performed with 0.01 M citrate buffer (pH 6.0) prior to immunohistochemistry staining.



Immunohistochemistry analysis of Ferritin Light Chain in paraffin-embedded rat kidney tissue using Ferritin Light Chain rabbit monoclonal antibody (STJ11101302) at a dilution of 1:400 (40x lens). High pressure antigen retrieval was performed with 0.01 M citrate buffer (pH 6.0) prior to immunohistochemistry staining.