

Anti-XRCC6 antibody (500-609) [S7MR] (STJ11101297)

GENERAL INFORMATION

Product Type	Primary antibodies
Applications	WB/IHC-P/IF/ICC/ELISA
Host / Source	Rabbit
Reactivity	Human/Mouse

PRODUCT PROPERTIES

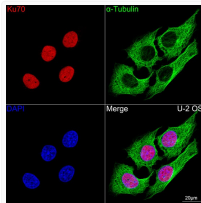
Clonality	Monoclonal
Concentration	Lot specific
Conjugation	Unconjugated
Purification	Affinity purification
Dilution Range	WB:1:6000-1:36000 IHC-P:1:200-1:800 IF/CC:1:100-1:1000 ELISA:Recommended starting concentration is 1 µg/mL. Please optimize the concentration based on your specific assay requirements.
Formulation	PBS with 0.02% Sodium Azide, 0.05% BSA, 50% Glycerol, pH 7.3.
Isotype	IgG
Molecular Weight	Protein Mw: 70kDa Observed Mw: 70kDa
Storage Instruction	Store at -20°C for up to 1 year from the date of receipt, and avoid repeat freeze-thaw cycles.

TARGET INFORMATION

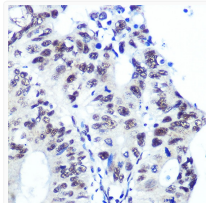
Gene ID	2547
Gene Symbol	XRCC6
UniProt ID	XRCC6_HUMAN
Immunogen Region	500-609
Immunogen Sequence	PEQAVDLTLPKVEAMNKRLG SLVDFEKELVYPPDYNPEGK VTKRKHDNEGSGSKRPKVEY SEELKTHISKGTLGKFTVP MLKEACRAYGLKSGSLKKQEL LEALTKHFQD
Specificity	A synthetic peptide corresponding to a sequence within amino acids 500-609 of human Ku70 (P12956).

ADDITIONAL INFORMATION

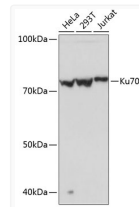
Note STRICTLY FOR FURTHER SCIENTIFIC RESEARCH USE ONLY (RUO). MUST NOT TO BE USED IN DIAGNOSTIC OR THERAPEUTIC APPLICATIONS.



Confocal imaging of U-2 OS cells using Ku70 Rabbit monoclonal antibody (STJ11101297, dilution 1:100) (Red). The cells were counterstained with Alpha-Tubulin Mouse monoclonal antibody (dilution 1:400) (Green). DAPI was used for nuclear staining (blue). Objective: 100x.



Immunohistochemistry analysis of paraffin-embedded human colon carcinoma using Ku70 Rabbit monoclonal antibody (STJ11101297) at dilution of 1:100 (40x lens). Perform microwave antigen retrieval with 10 mM PBS buffer pH 7.2 before commencing with immunohistochemistry staining protocol.



Western blot analysis of extracts from various cell lines, using Ku70 Rabbit monoclonal antibody (STJ11101297) at 1:1000 dilution. Secondary antibody: HRP Goat Anti-Rabbit IgG (H+L) (STJS000856) at 1:10000 dilution. Lysates/proteins: 25 µg per lane. Blocking buffer: 3% nonfat dry milk in TBST. Detection: ECL Basic Kit. Exposure time: 1s.