

Anti-ATP5A1 antibody (200-300) [S5MR] (STJ11101295)

GENERAL INFORMATION

Product Type	Primary antibodies
Applications	WB/IHC-P/IF/ICC/IP/ELISA
Host / Source	Rabbit
Reactivity	Human/Mouse/Rat

PRODUCT PROPERTIES

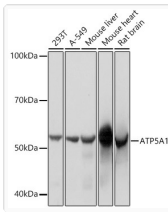
Clonality	Monoclonal
Concentration	Lot specific
Conjugation	Unconjugated
Purification	Affinity purification
Dilution Range	WB:1:1000-1:6000 IHC-P:1:200-1:2000 IF/CC:1:200-1:2000 IP:0.5 Mu g-4 Mu g antibody for 400 Mu g-600 Mu g extracts of whole cells ELISA:Recommended starting concentration is 1 Mu g/mL. Please optimize the concentration based on your s
Formulation	PBS with 0.02% Sodium Azide, 0.05% BSA, 50% Glycerol, pH 7.3.
Isotype	IgG
Molecular Weight	Protein Mw: 60kDa Observed Mw: 55kDa
Storage Instruction	Store at -20°C for up to 1 year from the date of receipt, and avoid repeat freeze-thaw cycles.

TARGET INFORMATION

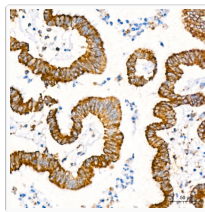
Gene ID	498
Gene Symbol	ATP5F1A
UniProt ID	ATPA_HUMAN
Immunogen Region	200-300
Immunogen Sequence	VPIGRGQRELIIGDRQTGKT SIAIDIINQKRFNDGSDEK KKLYCIYVAIGQKRSTVAQL VKRLTDADAMKYTIVVSATA SDAAPLQYLAPYSGCSMGEY F
Specificity	A synthetic peptide corresponding to a sequence within amino acids 200-300 of human ATP5A1 (P25705).

ADDITIONAL INFORMATION

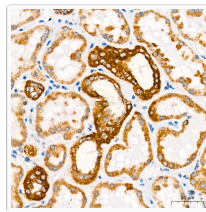
Note	STRICTLY FOR FURTHER SCIENTIFIC RESEARCH USE ONLY (RUO). MUST NOT TO BE USED IN DIAGNOSTIC OR THERAPEUTIC APPLICATIONS.
------	---



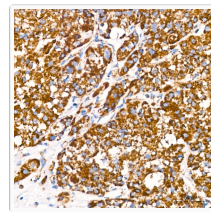
Western blot analysis of extracts of various cell lines, using ATP5A1 rabbit monoclonal antibody (STJ11101295) at 1:1000 dilution. Secondary antibody: HRP Goat Anti-rabbit IgG (H+L) (STJS000856) at 1:10000 dilution. Lysates/proteins: 25 μ g per lane. Blocking buffer: 3% non-fat dry milk in TBST. Detection: ECL Basic Kit. Exposure time: 1s.



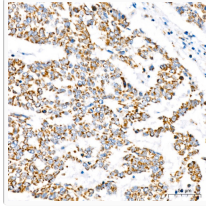
Immunohistochemistry analysis of paraffin-embedded human colon carcinoma using ATP5A1 rabbit monoclonal antibody (STJ11101295) at dilution of 1:200 (40x lens). Perform high pressure antigen retrieval with 10 mM citrate buffer pH 6.0 before commencing with immunohistochemistry staining protocol.



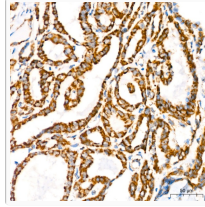
Immunohistochemistry analysis of paraffin-embedded human kidney using ATP5A1 rabbit monoclonal antibody (STJ11101295) at dilution of 1:200 (40x lens). Perform high pressure antigen retrieval with 10 mM citrate buffer pH 6.0 before commencing with immunohistochemistry staining protocol.



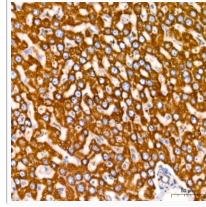
Immunohistochemistry analysis of paraffin-embedded human liver cancer using ATP5A1 rabbit monoclonal antibody (STJ11101295) at dilution of 1:200 (40x lens). Perform high pressure antigen retrieval with 10 mM citrate buffer pH 6.0 before commencing with immunohistochemistry staining protocol.



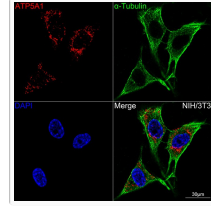
Immunohistochemistry analysis of paraffin-embedded human lung squamous carcinoma tissue using ATP5A1 rabbit monoclonal antibody (STJ11101295) at dilution of 1:200 (40x lens). Perform high pressure antigen retrieval with 10 mM citrate buffer pH 6.0 before commencing with immunohistochemistry staining protocol.



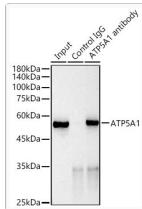
Immunohistochemistry analysis of paraffin-embedded human thyroid cancer using ATP5A1 rabbit monoclonal antibody (STJ11101295) at dilution of 1:200 (40x lens). Perform high pressure antigen retrieval with 10 mM citrate buffer pH 6.0 before commencing with immunohistochemistry staining protocol.



Immunohistochemistry analysis of paraffin-embedded rat liver using ATP5A1 rabbit monoclonal antibody (STJ11101295) at dilution of 1:200 (40x lens). Perform high pressure antigen retrieval with 10 mM citrate buffer pH 6.0 before commencing with immunohistochemistry staining protocol.



Confocal imaging of NIH/3T3 cells using ATP5A1 rabbit monoclonal antibody (STJ11101295, dilution 1:100) (Green). The cells were counterstained with Alpha-tubulin (ubiquitous) chain rabbit monoclonal antibody (dilution 1:100) (Red). DAPI was used for nuclear staining (blue). Objective: 60x.



Immunoprecipitation analysis of 600 μ g extracts of mouse heart cells using 3 μ g ATP5A1 antibody (STJ11101295). Western blot was performed from the immunoprecipitate using ATP5A1 antibody (STJ11101295) at a dilution of 1:1000.