

Anti-FABP1 antibody (1-100) [S3MR] (STJ11101293)

GENERAL INFORMATION

Product Type	Primary antibodies
Applications	WB/IF/ICC/ELISA
Host / Source	Rabbit
Reactivity	Human/Mouse/Rat

PRODUCT PROPERTIES

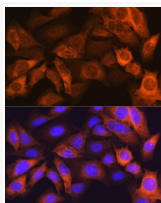
Clonality	Monoclonal
Concentration	Lot specific
Conjugation	Unconjugated
Purification	Affinity purification
Dilution Range	WB:1:1000-1:6000 IF/CC:1:100-1:400 ELISA:Recommended starting concentration is 1 μ g/mL. Please optimize the concentration based on your specific assay requirements.
Formulation	PBS with 0.02% Sodium Azide, 0.05% BSA, 50% Glycerol, pH 7.3.
Isotype	IgG
Molecular Weight	Protein Mw: 14kDa Observed Mw: 14kDa
Storage Instruction	Store at -20°C for up to 1 year from the date of receipt, and avoid repeat freeze-thaw cycles.

TARGET INFORMATION

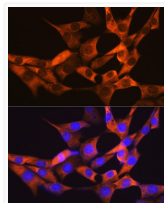
Gene ID	2168
Gene Symbol	FABP1
UniProt ID	FABPL_HUMAN
Immunogen Region	1-100
Immunogen Sequence	MSFSGKYQLSQENFEAFMK AIGLPEELIQKGDIKGVSE IVQNGKHFKFTITAGSKVIQ NEFTVGEECELETMTGEKVK TVVQLEGDNKLVTTFKNIKS
Specificity	A synthetic peptide corresponding to a sequence within amino acids 1-100 of human FABP1 (P07148).

ADDITIONAL INFORMATION

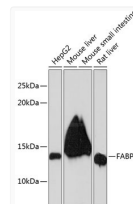
Note STRICTLY FOR FURTHER SCIENTIFIC RESEARCH USE ONLY (RUO). MUST NOT TO BE USED IN DIAGNOSTIC OR THERAPEUTIC APPLICATIONS.



Immunofluorescence analysis of U-2 OS cells using FABP1 Rabbit monoclonal antibody (STJ11101293) at dilution of 1:100 (40x lens). Blue: DAPI for nuclear staining.



Immunofluorescence analysis of NIH-3T3 cells using FABP1 Rabbit monoclonal antibody (STJ11101293) at dilution of 1:100 (40x lens). Blue: DAPI for nuclear staining.



Western blot analysis of extracts of various cell lines, using FABP1 Rabbit monoclonal antibody (STJ11101293) at 1:1000 dilution. Secondary antibody: HRP Goat Anti-Rabbit IgG (H+L) (STJS000856) at 1:10000 dilution. Lysates/proteins: 25 μ g per lane. Blocking buffer: 3% nonfat dry milk in TBST. Detection: ECL Basic Kit. Exposure time: 60s.