

## Anti-MBP antibody (161-304) [S5MR] (STJ11101285)

### GENERAL INFORMATION

Product Type	Primary antibodies
Applications	WB/IF/ICC/ELISA
Host / Source	Rabbit
Reactivity	Mouse/Rat

### PRODUCT PROPERTIES

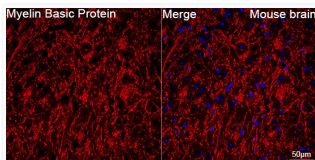
Clonality	Monoclonal
Concentration	Lot specific
Conjugation	Unconjugated
Purification	Affinity purification
Dilution Range	WB:1:1000-1:6000 IF/CC:1:200-1:2000 ELISA:Recommended starting concentration is 1 Mu g/mL. Please optimize the concentration based on your specific assay requirements.
Formulation	PBS with 0.02% Sodium Azide, 0.05% BSA, 50% Glycerol, pH 7.3.
Isotype	IgG
Molecular Weight	Protein Mw: 33kDa Observed Mw: 14-23kDa
Storage Instruction	Store at -20°C for up to 1 year from the date of receipt, and avoid repeat freeze-thaw cycles.

### TARGET INFORMATION

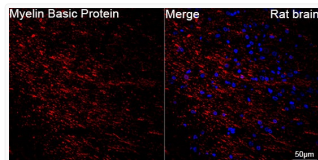
Gene ID	<a href="#">4155</a>
Gene Symbol	<a href="#">MBP</a>
UniProt ID	<a href="#">MBP_HUMAN</a>
Immunogen Region	161-304
Immunogen Sequence	GFLPRHRDGTGILDSIGRFFG GDRGAPKRGSGKDSHHPART AHYGLPQKSHGRTQDENPV VHFFKNIVTPRTPPPSQGGK RGLSLSRFSWGAEGQRPGFG YGGRASDYKSAHKGFKGVDA QGTLISKIFKLGGRDSRSGSP MARR
Specificity	Recombinant fusion protein containing a sequence corresponding to amino acids 161-304 of human Myelin Basic Protein (P02686).

### ADDITIONAL INFORMATION

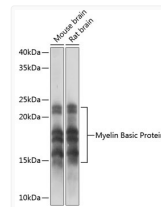
Note **STRICTLY FOR FURTHER SCIENTIFIC RESEARCH USE ONLY (RUO). MUST NOT TO BE USED IN DIAGNOSTIC OR THERAPEUTIC APPLICATIONS.**



Confocal imaging of paraffin-embedded Mouse brain using Myelin Basic Protein Rabbit monoclonal antibody (STJ11101285, dilution 1:200) followed by a further incubation with Cy3 Goat Anti-Rabbit IgG (H+L) (dilution 1:500) (Red). DAPI was used for nuclear staining (Blue). Objective: 40x. Perform microwave antigen retrieval with 0.01 M citRate buffer (pH 6.0) prior to IF staining.



Confocal imaging of paraffin-embedded Rat brain using Myelin Basic Protein Rabbit monoclonal antibody (STJ11101285, dilution 1:200) followed by a further incubation with Cy3 Goat Anti-Rabbit IgG (H+L) (dilution 1:500) (Red). DAPI was used for nuclear staining (Blue). Objective: 40x. Perform microwave antigen retrieval with 0.01 M citRate buffer (pH 6.0) prior to IF staining.



Western blot analysis of various lysates using Myelin Basic Protein Rabbit monoclonal antibody (STJ11101285) at 1:1000 dilution. Secondary antibody: HRP Goat Anti-Rabbit IgG (H+L) (STJS000856) at 1:10000 dilution. Lysates/proteins: 25 Mu g per lane. Blocking buffer: 3% nonfat dry milk in TBST. Detection: ECL Basic Kit. Exposure time: 1s.