

Anti-CD247 antibody (65-164) [S4MR] (STJ11101284)

GENERAL INFORMATION

Product Type	Primary antibodies
Applications	WB/IHC-P/FC/ELISA
Host / Source	Rabbit
Reactivity	Human

PRODUCT PROPERTIES

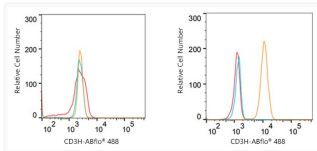
Clonality	Monoclonal
Concentration	Lot specific
Conjugation	Unconjugated
Purification	Affinity purification
Dilution Range	WB:1:1000-1:2000 IHC-P:1:50-1:200 FC (intra) :1:50-1:200 ELISA:Recommended starting concentration is 1 Mu g/mL. Please optimize the concentration based on your specific assay requirements.
Formulation	PBS with 0.02% Sodium Azide, 0.05% BSA, 50% Glycerol, pH 7.3.
Isotype	IgG
Molecular Weight	Protein Mw: 19kDa Observed Mw: 16kDa
Storage Instruction	Store at -20°C for up to 1 year from the date of receipt, and avoid repeat freeze-thaw cycles.

TARGET INFORMATION

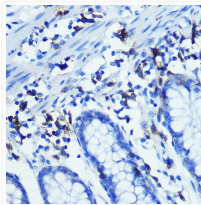
Gene ID	919
Gene Symbol	CD247
UniProt ID	CD3Z_HUMAN
Immunogen Region	65-164
Immunogen Sequence	QQGQNQLYNELNGLRREEYD VLDKRRGRDPEMGGKPQRRK NPQEGLYNELQKDKMAEAYS EIGMKGERRRRGKGDGLYQQ LSTATKDTYDALHMQALPPR
Specificity	A synthetic peptide corresponding to a sequence within amino acids 65-164 of human CD3H (P20963).

ADDITIONAL INFORMATION

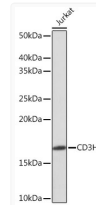
Note STRICTLY FOR FURTHER SCIENTIFIC RESEARCH USE ONLY (RUO). MUST NOT TO BE USED IN DIAGNOSTIC OR THERAPEUTIC APPLICATIONS.



Flow cytometry: 1×10^6 Raji cells (negative control, left) and Jurkat cells (right) were intracellularly-stained with CD3H Rabbit monoclonal antibody (STJ11101284, 10 Mu g/mL, orange line) or Rabbit IgG isotype control (10 Mu g/mL, blue line), followed by FITC conjugated goat anti-rabbit polyclonal antibody (1:200 dilution) staining. Non-fluorescently stained cells were used as blank control (red line).



Immunohistochemistry analysis of CD3H in paraffin-embedded human colon using CD3H Rabbit monoclonal antibody (STJ11101284) at dilution of 1:100 (40x lens). Perform microwave antigen retrieval with 10 mM PBS buffer pH 7.2 before commencing with immunohistochemistry staining protocol.



Western blot analysis of lysates from Jurkat cells, using CD3H Rabbit monoclonal antibody (STJ11101284) at 1:1000 dilution. Secondary antibody: HRP Goat Anti-Rabbit IgG (H+L) (STJS000856) at 1:10000 dilution. Lysates/proteins: 25 Mu g per lane. Blocking buffer: 3% nonfat dry milk in TBST. Detection: ECL Enhanced Kit. Exposure time: 3min.