

## Anti-HLA-DRA antibody (100-200) [S1MR] (STJ11101271)

### GENERAL INFORMATION

Product Type	Primary antibodies
Applications	WB/IHC-P/ELISA
Host / Source	Rabbit
Reactivity	Human

### PRODUCT PROPERTIES

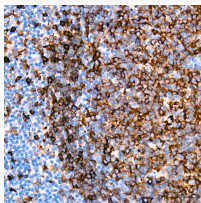
Clonality	Monoclonal
Concentration	Lot specific
Conjugation	Unconjugated
Purification	Affinity purification
Dilution Range	WB:1:500-1:2000 IHC-P:1:1000-1:5000 ELISA:Recommended starting concentration is 1 $\mu$ g/mL. Please optimize the concentration based on your specific assay requirements.
Formulation	PBS with 0.02% Sodium Azide, 0.05% BSA, 50% Glycerol, pH 7.3.
Isotype	IgG
Molecular Weight	Protein Mw: 29kDa Observed Mw: 33kDa
Storage Instruction	Store at -20°C for up to 1 year from the date of receipt, and avoid repeat freeze-thaw cycles.

### TARGET INFORMATION

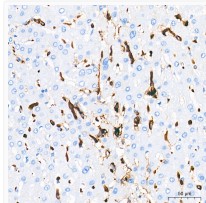
Gene ID	<a href="#">3122</a>
Gene Symbol	<a href="#">HLA-DRA</a>
UniProt ID	<a href="#">DRA_HUMAN</a>
Immunogen Region	100-200
Immunogen Sequence	KRSNYTPITNVPPEVTVLTN SPVELREP NVLICFDKFTP P VVNVTWLRNGKPVTTGVSE TVFLPREDHLFRKFHYLPFL PSTEDVYDCRVEHWGLDEPL L
Specificity	A synthetic peptide corresponding to a sequence within amino acids 100-200 of human HLA-DRA (P01903).

### ADDITIONAL INFORMATION

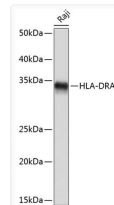
Note **STRICTLY FOR FURTHER SCIENTIFIC RESEARCH USE ONLY (RUO). MUST NOT TO BE USED IN DIAGNOSTIC OR THERAPEUTIC APPLICATIONS.**



Immunohistochemistry analysis of HLA-DRA in paraffin-embedded human tonsil tissue using HLA-DRA Rabbit monoclonal antibody (STJ11101271) at a dilution of 1:1600 (40x lens). High pressure antigen retrieval was performed with 0.01 M citrate buffer (pH 6.0) prior to immunohistochemistry staining.



Immunohistochemistry analysis of HLA-DRA in paraffin-embedded human liver tissue using HLA-DRA Rabbit monoclonal antibody (STJ11101271) at a dilution of 1:1600 (40x lens). High pressure antigen retrieval was performed with 0.01 M citrate buffer (pH 6.0) prior to immunohistochemistry staining.



Western blot analysis of lysates from Raji cells, using HLA-DRA Rabbit monoclonal antibody (STJ11101271) at 1:1000 dilution. Secondary antibody: HRP Goat Anti-Rabbit IgG (H+L) (STJS000856) at 1:10000 dilution. Lysates/proteins: 25  $\mu$ g per lane. Blocking buffer: 3% nonfat dry milk in TBST. Detection: ECL Basic Kit. Exposure time: 1s.