

Anti-HYOU1 antibody (1-150) [S0MR] (STJ11101270)

GENERAL INFORMATION

Product Type	Primary antibodies
Applications	WB/IHC-P/ELISA
Host / Source	Rabbit
Reactivity	Human/Mouse/Rat

PRODUCT PROPERTIES

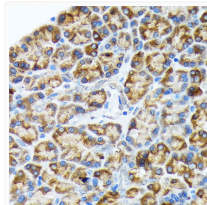
Clonality	Monoclonal
Concentration	Lot specific
Conjugation	Unconjugated
Purification	Affinity purification
Dilution Range	WB:1:500-1:1000 IHC-P:1:50-1:200 ELISA:Recommended starting concentration is 1 μ g/mL. Please optimize the concentration based on your specific assay requirements.
Formulation	PBS with 0.02% Sodium Azide, 0.05% BSA, 50% Glycerol, pH 7.3.
Isotype	IgG
Molecular Weight	Protein Mw: 111kDa Observed Mw: 150kDa
Storage Instruction	Store at -20°C for up to 1 year from the date of receipt, and avoid repeat freeze-thaw cycles.

TARGET INFORMATION

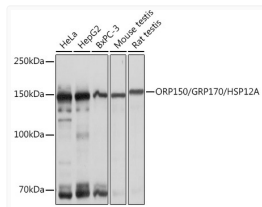
Gene ID	10525
Gene Symbol	HYOU1
UniProt ID	HYOU1_HUMAN
Immunogen Region	1-150
Immunogen Sequence	MADKVRRRQRPRRRVCWALVA VLLADLLALSDTLAVMSVDL GSESMKVAIVKPGVPM EIVL NKESRRKTPVIVTLKENERF FGDSAASMAIKNPKATLRYF QHLLGKQADNPHVALYQARF PEHELT FDPQRQT VHFQISS QLQFSPEEVL
Specificity	Recombinant fusion protein containing a sequence corresponding to amino acids 1-150 of human ORP150/GRP170/HSP12A (Q9Y4L1).

ADDITIONAL INFORMATION

Note **STRICTLY FOR FURTHER SCIENTIFIC RESEARCH USE ONLY (RUO). MUST NOT TO BE USED IN DIAGNOSTIC OR THERAPEUTIC APPLICATIONS.**



Immunohistochemistry analysis of paraffin-embedded rat pancreas using ORP150/GRP170/HSP12A Rabbit monoclonal antibody (STJ11101270) at dilution of 1:100 (40x lens). Perform microwave antigen retrieval with 10 mM Tris/EDTA buffer pH 9.0 before commencing with immunohistochemistry staining protocol.



Western blot analysis of extracts of various cell lines, using ORP150/GRP170/HSP12A Rabbit monoclonal antibody (STJ11101270) at 1:1000 dilution. Secondary antibody: HRP Goat Anti-Rabbit IgG (H+L) (STJS000856) at 1:10000 dilution. Lysates/proteins: 25 μ g per lane. Blocking buffer: 3% nonfat dry milk in TBST. Detection: ECL Basic Kit. Exposure time: 1s.