

## Anti-HES1 antibody (181-280) [S2MR] (STJ11101262)

### GENERAL INFORMATION

Product Type	Primary antibodies
Applications	WB/IHC-P/IP/ELISA
Host / Source	Rabbit
Reactivity	Human/Mouse/Rat

### PRODUCT PROPERTIES

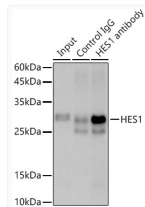
Clonality	Monoclonal
Concentration	Lot specific
Conjugation	Unconjugated
Purification	Affinity purification
Dilution Range	WB:1:1000-1:2000 IHC-P:1:1000-1:4000 IP:0.5 Mu g-4 Mu g antibody for 400 Mu g-600 Mu g extracts of whole cells ELISA:Recommended starting concentration is 1 Mu g/mL. Please optimize the concentration based on your specific assay requireme
Formulation	PBS with 0.02% Sodium Azide, 0.05% BSA, 50% Glycerol, pH 7.3.
Isotype	IgG
Molecular Weight	Protein Mw: 30kDa Observed Mw: 30kDa
Storage Instruction	Store at -20°C for up to 1 year from the date of receipt, and avoid repeat freeze-thaw cycles.

### TARGET INFORMATION

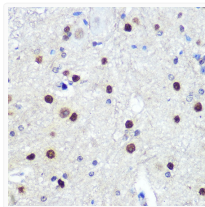
Gene ID	<a href="#">3280</a>
Gene Symbol	<a href="#">HES1</a>
UniProt ID	<a href="#">HES1_HUMAN</a>
Immunogen Region	181-280
Immunogen Sequence	FAPPPPLVPIPGGAAPPPGG APCKLGSQAGEAAKVFGGFQ VVPAPDGQFAFLIPNGAFAH SGPVIPVYTSNSGTSVGPNA VSPSSGSPSLTADSMWRPWRN
Specificity	A synthetic peptide corresponding to a sequence within amino acids 181-280 of human HES1 (Q14469).

### ADDITIONAL INFORMATION

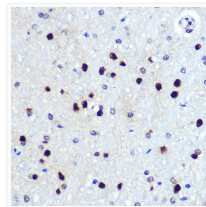
Note STRICTLY FOR FURTHER SCIENTIFIC RESEARCH USE ONLY (RUO). MUST NOT TO BE USED IN DIAGNOSTIC OR THERAPEUTIC APPLICATIONS.



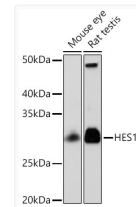
Immunoprecipitation analysis of 600 Mu g extracts of Rat testis cells using 3 Mu g HES1 antibody (STJ11101262). Western blot was performed from the immunoprecipitate using HES1 antibody (STJ11101262) at a dilution of 1:500.



Immunohistochemistry analysis of HES1 in paraffin-embedded mouse spinal cord using HES1 Rabbit monoclonal antibody (STJ11101262) at dilution of 1:100 (40x lens). Perform microwave antigen retrieval with 10 mM PBS buffer pH 7. 2 before commencing with immunohistochemistry staining protocol.



Immunohistochemistry analysis of HES1 in paraffin-embedded rat brain using HES1 Rabbit monoclonal antibody (STJ11101262) at dilution of 1:100 (40x lens). Perform microwave antigen retrieval with 10 mM PBS buffer pH 7. 2 before commencing with immunohistochemistry staining protocol.



Western blot analysis of various lysates using HES1 Rabbit monoclonal antibody (STJ11101262) at 1: 1000 dilution. Secondary antibody: HRP Goat Anti-Rabbit IgG (H+L) (STJS000856) at 1:10000 dilution. Lysates/proteins: 25 Mu g per lane. Blocking buffer: 3% nonfat dry milk in TBST. Detection: ECL Basic Kit. Exposure time: 3min.