

Anti-CD8A antibody (136-235) [S1MR] (STJ11101251)

GENERAL INFORMATION

Product Type	Primary antibodies
Applications	WB/FC/ELISA
Host / Source	Rabbit
Reactivity	Human

PRODUCT PROPERTIES

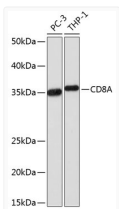
Clonality	Monoclonal
Concentration	Lot specific
Conjugation	Unconjugated
Purification	Affinity purification
Dilution Range	WB:1:1000-1:2000 FC:1:50-1:200 ELISA:Recommended starting concentration is 1 Mu g/mL. Please optimize the concentration based on your specific assay requirements.
Formulation	PBS with 0.02% Sodium Azide, 0.05% BSA, 50% Glycerol, pH 7.3.
Isotype	IgG
Molecular Weight	Protein Mw: 26kDa Observed Mw: 35kDa
Storage Instruction	Store at -20°C for up to 1 year from the date of receipt, and avoid repeat freeze-thaw cycles.

TARGET INFORMATION

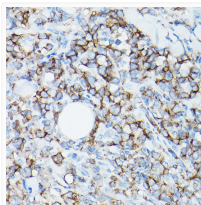
Gene ID	925
Gene Symbol	CD8A
UniProt ID	CD8A_HUMAN
Immunogen Region	136-235
Immunogen Sequence	KPTTTPAPRPPTPAPTASQ PLSLRPEACRPAAGGAVHTR GLDFACDIYWAPLAGTCGV LLLSLVITLYCNRNRNRVC KCPRPVVKSGDKPSSLARYV
Specificity	A synthetic peptide corresponding to a sequence within amino acids 136-235 of human CD8A (P01732).

ADDITIONAL INFORMATION

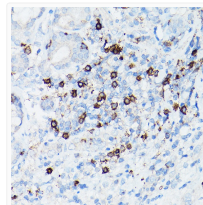
Note **STRICTLY FOR FURTHER SCIENTIFIC RESEARCH USE ONLY (RUO). MUST NOT TO BE USED IN DIAGNOSTIC OR THERAPEUTIC APPLICATIONS.**



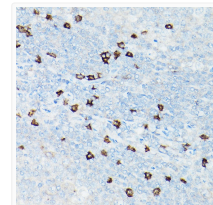
Western blot analysis of extracts of various cell lines, using CD8A rabbit monoclonal antibody (STJ11101251) at 1:1000 dilution. Secondary antibody: HRP Goat Anti-rabbit IgG (H+L) (STJS000856) at 1:10000 dilution. Lysates/proteins: 25 Mu g per lane. Blocking buffer: 3% non-fat dry milk in TBST. Detection: ECL Basic Kit. Exposure time: 3min.



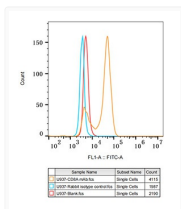
Immunohistochemistry analysis of paraffin-embedded Human intestinal T-cell lymphoma using CD8A rabbit monoclonal antibody (STJ11101251) at dilution of 1:100 (40x lens). Perform high pressure antigen retrieval with 10 mM citrate buffer pH 6.0 before commencing with immunohistochemistry staining protocol.



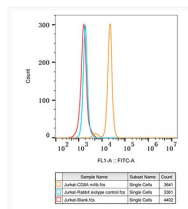
Immunohistochemistry analysis of paraffin-embedded Human T-cell malignant lymphoma using CD8A rabbit monoclonal antibody (STJ11101251) at dilution of 1:100 (40x lens). Perform high pressure antigen retrieval with 10 mM citrate buffer pH 6.0 before commencing with immunohistochemistry staining protocol.



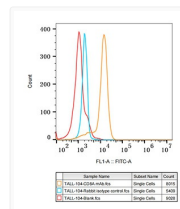
Immunohistochemistry analysis of paraffin-embedded human tonsil using CD8A rabbit monoclonal antibody (STJ11101251) at dilution of 1:100 (40x lens). Perform high pressure antigen retrieval with 10 mM citrate buffer pH 6.0 before commencing with immunohistochemistry staining protocol.



Flow cytometry: U937 cells were stained with rabbit IgG isotype control (10 Mu g/mL, blue line) or CD8A rabbit monoclonal antibody (STJ11101251, 10 Mu g/mL, orange line), followed by FITC conjugated goat anti-rabbit polyclonal antibody (1:200 dilution) staining. Non-fluorescently stained U937 cells were used as blank control (red line).



Flow cytometry: Jurkat cells were stained with rabbit IgG isotype control (10 Mu g/mL, blue line) or CD8A rabbit monoclonal antibody (STJ11101251, 10 Mu g/mL, orange line), followed by FITC conjugated goat anti-rabbit polyclonal antibody (1:200 dilution) staining. Non-fluorescently stained Jurkat cells were used as blank control (red line).



Flow cytometry: TALL-104 cells were stained with rabbit IgG isotype control (10 Mu g/mL, blue line) or CD8A rabbit monoclonal antibody (STJ11101251, 10 Mu g/mL, orange line), followed by FITC conjugated goat anti-rabbit polyclonal antibody (1:200 dilution) staining. Non-fluorescently stained TALL-104 cells were used as blank control (red line).