

Anti-GOPC antibody (1-100) [S4MR] (STJ11101244)

GENERAL INFORMATION

Product Type	Primary antibodies
Applications	WB/IHC-P/IF/ICC/ELISA
Host / Source	Rabbit
Reactivity	Human/Mouse/Rat

PRODUCT PROPERTIES

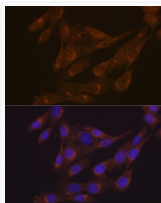
Clonality	Monoclonal
Concentration	Lot specific
Conjugation	Unconjugated
Purification	Affinity purification
Dilution Range	WB:1:500-1:1000 IHC-P:1:50-1:200 IF/CC:1:50-1:200 ELISA:Recommended starting concentration is 1 μ g/mL. Please optimize the concentration based on your specific assay requirements.
Formulation	PBS with 0.02% Sodium Azide, 0.05% BSA, 50% Glycerol, pH 7.3.
Isotype	IgG
Molecular Weight	Protein Mw: 51kDa Observed Mw: 59kDa
Storage Instruction	Store at -20°C for up to 1 year from the date of receipt, and avoid repeat freeze-thaw cycles.

TARGET INFORMATION

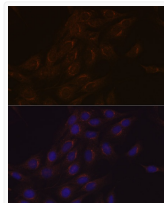
Gene ID	57120
Gene Symbol	GOPC
UniProt ID	GOPC_HUMAN
Immunogen Region	1-100
Immunogen Sequence	MSAGGPCPAAAGGGPGGASC SVGAPGGVSMFRWLEVLEKE FDKAFVDVLLLLGEIDPDQA DITYEGRQKMTSLSSCFAQL CHKAQSVSQINHKLEAQLVD
Specificity	Recombinant fusion protein containing a sequence corresponding to amino acids 1-100 of human PIST/GOPC (Q9HD26).

ADDITIONAL INFORMATION

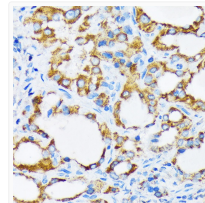
Note **STRICTLY FOR FURTHER SCIENTIFIC RESEARCH USE ONLY (RUO). MUST NOT TO BE USED IN DIAGNOSTIC OR THERAPEUTIC APPLICATIONS.**



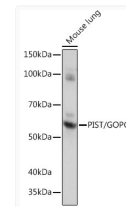
Immunofluorescence analysis of NIH-3T3 cells using PIST/GOPC Rabbit monoclonal antibody (STJ11101244) at dilution of 1:100 (40x lens). Secondary antibody: Cy3 Goat Anti-Rabbit IgG (H+L) at 1:500 dilution. Blue: DAPI for nuclear staining.



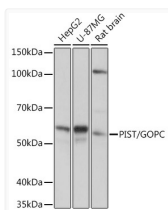
Immunofluorescence analysis of C6 cells using PIST/GOPC Rabbit monoclonal antibody (STJ11101244) at dilution of 1:100 (40x lens). Secondary antibody: Cy3 Goat Anti-Rabbit IgG (H+L) at 1:500 dilution. Blue: DAPI for nuclear staining.



Immunohistochemistry analysis of PIST/GOPC in paraffin-embedded human thyroid cancer using PIST/GOPC Rabbit monoclonal antibody (STJ11101244) at dilution of 1:100 (40x lens). Perform microwave antigen retrieval with 10 mM Tris/EDTA buffer pH 9.0 before commencing with immunohistochemistry staining protocol.



Western blot analysis of lysates from Mouse lung, using PIST/GOPC Rabbit monoclonal antibody (STJ11101244) at 1:1000 dilution. Secondary antibody: HRP Goat Anti-Rabbit IgG (H+L) (STJS000856) at 1:10000 dilution. Lysates/proteins: 25 μ g per lane. Blocking buffer: 3% nonfat dry milk in TBST. Detection: ECL Basic Kit. Exposure time: 5s.



Western blot analysis of various lysates using PIST/GOPC Rabbit monoclonal antibody (STJ11101244) at 1:1000 dilution. Secondary antibody: HRP Goat Anti-Rabbit IgG (H+L) (STJS000856) at 1:10000 dilution. Lysates/proteins: 25 μ g per lane. Blocking buffer: 3% nonfat dry milk in TBST. Detection: ECL Basic Kit. Exposure time: 1s.