

Anti-HK1 antibody (50-150) [S9MR] (STJ11101239)

GENERAL INFORMATION

Product Type	Primary antibodies
Applications	WB/IHC-P/IF/ICC/IP/ELISA
Host / Source	Rabbit
Reactivity	Human/Mouse/Rat

PRODUCT PROPERTIES

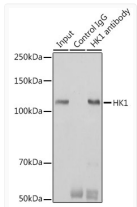
Clonality	Monoclonal
Concentration	Lot specific
Conjugation	Unconjugated
Purification	Affinity purification
Dilution Range	WB:1:1000-1:2000 IHC-P:1:200-1:800 IF/CC:1:200-1:800 IP:0.5 Mu g-4 Mu g antibody for 400 Mu g-600 Mu g extracts of whole cells ELISA:Recommended starting concentration is 1 Mu g/mL. Please optimize the concentration based on your spe
Formulation	PBS with 0.02% Sodium Azide, 0.05% BSA, 50% Glycerol, pH 7.3.
Isotype	IgG
Molecular Weight	Protein Mw: 102kDa Observed Mw: 120kDa
Storage Instruction	Store at -20°C for up to 1 year from the date of receipt, and avoid repeat freeze-thaw cycles.

TARGET INFORMATION

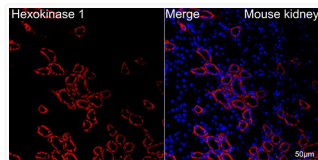
Gene ID	3098
Gene Symbol	HK1
UniProt ID	HXX1_HUMAN
Immunogen Region	50-150
Immunogen Sequence	GLSRDFNPTATVKMLPTFVRSIPDGSEKGFIALDLGGSSFRILRVQVNHKEKNQNVHMES EVYDTPENIVHSGSGLFDHVAECLGDFMEKRKIKDKKLPV
Specificity	A synthetic peptide corresponding to a sequence within amino acids 50-150 of human Hexokinase 1 (P19367).

ADDITIONAL INFORMATION

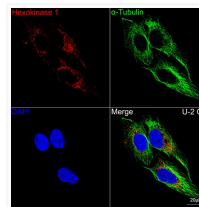
Note **STRICTLY FOR FURTHER SCIENTIFIC RESEARCH USE ONLY (RUO). MUST NOT TO BE USED IN DIAGNOSTIC OR THERAPEUTIC APPLICATIONS.**



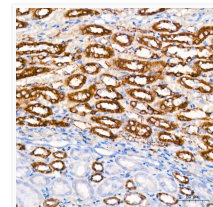
Immunoprecipitation analysis of 600 Mu g extracts of Mouse brain cells using 3 Mu g [KO Validated] HK1 Rabbit monoclonal antibody (STJ11101239). Western blot was performed from the immunoprecipitate using HK1 (STJ11101239) at a dilution of 1:1000.



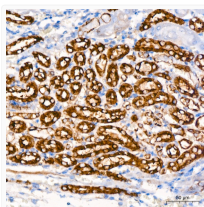
Confocal imaging of paraffin-embedded mouse kidney using [KO Validated] HK1 Rabbit monoclonal antibody (STJ11101239, dilution 1:200) followed by a further incubation with Cy3 Goat Anti-Rabbit IgG (H+L) (dilution 1:500) (Red). DAPI was used for nuclear staining (Blue). Objective: 40x. Perform high pressure antigen retrieval with 0.01M citrate buffer (pH 6.0) prior to IF staining.



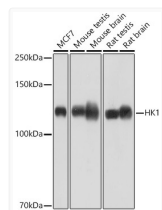
Confocal imaging of U-2 OS cells using [KO Validated] HK1 Rabbit monoclonal antibody (STJ11101239, dilution 1:200) followed by a further incubation with Cy3 Goat Anti-Rabbit IgG (H+L) (dilution 1:500) (Red). The cells were counterstained with Alpha-Tubulin Mouse monoclonal antibody (dilution 1:400) followed by incubation with ABflo® 488-conjugated Goat Anti-Mouse IgG (H+L) antibody (dilution 1:500) (Green). DAPI was used for nuclear staining (Blue). Objective: 100x.



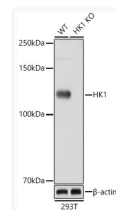
Immunohistochemistry analysis of HK1 in paraffin-embedded rat kidney using [KO Validated] HK1 Rabbit monoclonal antibody (STJ11101239) at dilution of 1:200 (40x lens). Perform high pressure antigen retrieval with 10 mM citrate buffer pH 6.0 before commencing with immunohistochemistry staining protocol.



Immunohistochemistry analysis of HK1 in paraffin-embedded mouse kidney using [KO Validated] HK1 Rabbit monoclonal antibody (STJ11101239) at dilution of 1:200 (40x lens). Perform high pressure antigen retrieval with 10 mM citrate buffer pH 6.0 before commencing with immunohistochemistry staining protocol.



Western blot analysis of various lysates using [KO Validated] HK1 Rabbit monoclonal antibody (STJ11101239) at 1:1000 dilution. Secondary antibody: HRP Goat Anti-Rabbit IgG (H+L) (STJS000856) at 1:10000 dilution. Lysates/proteins: 25 Mu g per lane. Blocking buffer: 3% nonfat dry milk in TBST. Detection: ECL Basic Kit. Exposure time: 60s.



Western blot analysis of lysates from wild type (WT) and HK1 knockout (KO) 293T cells, using [KO Validated] HK1 Rabbit monoclonal antibody (STJ11101239) at 1:1000 dilution. Secondary antibody: HRP Goat Anti-Rabbit IgG (H+L) (STJS000856) at 1:10000 dilution. Lysates/proteins: 25 Mu g per lane. Blocking buffer: 3% nonfat dry milk in TBST. Detection: ECL Basic Kit. Exposure time: 60s.