

Anti-ELP3 antibody (1-547) [S2MR] (STJ11101222)

GENERAL INFORMATION

Product Type	Primary antibodies
Applications	WB/IHC-P/ELISA
Host / Source	Rabbit
Reactivity	Human/Mouse/Rat

PRODUCT PROPERTIES

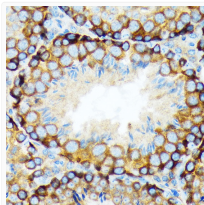
Clonality	Monoclonal
Concentration	Lot specific
Conjugation	Unconjugated
Purification	Affinity purification
Dilution Range	WB:1:500-1:1000 IHC-P:1:50-1:200 ELISA:Recommended starting concentration is 1 Mu g/mL. Please optimize the concentration based on your specific assay requirements.
Formulation	PBS with 0.02% Sodium Azide, 0.05% BSA, 50% Glycerol, pH 7.3.
Isotype	IgG
Molecular Weight	Protein Mw: 62kDa Observed Mw: 62kDa
Storage Instruction	Store at -20°C for up to 1 year from the date of receipt, and avoid repeat freeze-thaw cycles.

TARGET INFORMATION

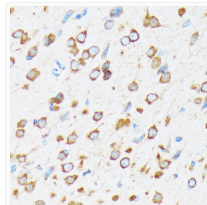
Gene ID	55140
Gene Symbol	ELP3
UniProt ID	ELP3_HUMAN
Immunogen Region	1-547
Immunogen Sequence	MRQKRKGDLSPAELMMLTIG DVIKQLIEAHEQGDIDLNK VKTKTAAKYGLSAQPRLVDI IAAVPPQYRKVLMPLKAKP IRTASGIADVAVMCKPHRCP HISFTGNICVYCPGGPDSDF EYTSQSYTGYEPTSMRAIRA RYDFPFLQTRHRIEQLKQLGH SVDKVEFIVMGGTFMALPEE YRDYFIRNLHDALSGHTSN IYEAVKYSERSLTKCIGITI ETRPDYCMKRHLSDMLTYG
Specificity	Recombinant fusion protein containing a sequence corresponding to amino acids 1-547 of human KAT9/Elp3 (Q9H9T3).

ADDITIONAL INFORMATION

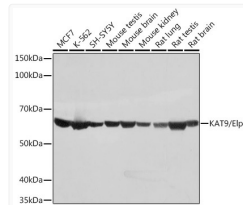
Note **STRICTLY FOR FURTHER SCIENTIFIC RESEARCH USE ONLY (RUO). MUST NOT TO BE USED IN DIAGNOSTIC OR THERAPEUTIC APPLICATIONS.**



Immunohistochemistry analysis of paraffin-embedded mouse testis using KAT9/Elp3 Rabbit monoclonal antibody (STJ11101222) at dilution of 1:100 (40x lens). Perform microwave antigen retrieval with 10 mM Tris/EDTA buffer pH 9.0 before commencing with immunohistochemistry staining protocol.



Immunohistochemistry analysis of paraffin-embedded rat brain using KAT9/Elp3 Rabbit monoclonal antibody (STJ11101222) at dilution of 1:100 (40x lens). Perform microwave antigen retrieval with 10 mM Tris/EDTA buffer pH 9.0 before commencing with immunohistochemistry staining protocol.



Western blot analysis of extracts of various cell lines, using KAT9/Elp3 Rabbit monoclonal antibody (STJ11101222) at 1:1000 dilution. Secondary antibody: HRP Goat Anti-Rabbit IgG (H+L) (STJS000856) at 1:10000 dilution. Lysates/proteins: 25 Mu g per lane. Blocking buffer: 3% nonfat dry milk in TBST. Detection: ECL Basic Kit. Exposure time: 1s.