

Anti-KRT4 antibody (1-100) [S1MR] (STJ11101221)

GENERAL INFORMATION

Product Type	Primary antibodies
Applications	WB/IHC-P/IF/ICC/ELISA
Host / Source	Rabbit
Reactivity	Human/Mouse/Rat

PRODUCT PROPERTIES

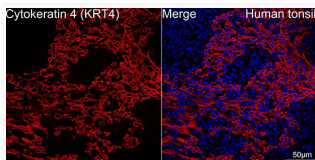
Clonality	Monoclonal
Concentration	Lot specific
Conjugation	Unconjugated
Purification	Affinity purification
Dilution Range	WB:1:1000-1:4000 IHC-P:1:500-1:2000 IF/CC:1:100-1:400 ELISA:Recommended starting concentration is 1 Mu g/mL. Please optimize the concentration based on your specific assay requirements.
Formulation	PBS with 0.02% Sodium Azide, 0.05% BSA, 50% Glycerol, pH 7.3.
Isotype	IgG
Molecular Weight	Protein Mw: 56kDa Observed Mw: 57kDa
Storage Instruction	Store at -20°C for up to 1 year from the date of receipt, and avoid repeat freeze-thaw cycles.

TARGET INFORMATION

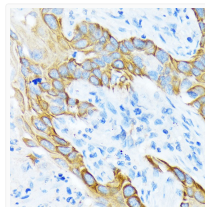
Gene ID	3851
Gene Symbol	KRT4
UniProt ID	K2C4_HUMAN
Immunogen Region	1-100
Immunogen Sequence	MIARQQCVRGGPRGFSCGSA IVGGGKRGAFSSVSMGGAG RCSSGGFGSRSLYNLRGNKSI ISMSVAGSRQACFGGAGGF GTGGFGGGFGGSFSGKGGPG
Specificity	A synthetic peptide corresponding to a sequence within amino acids 1-100 of human Cytokeratin 4 (KRT4) (P19013).

ADDITIONAL INFORMATION

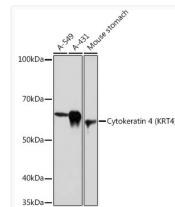
Note **STRICTLY FOR FURTHER SCIENTIFIC RESEARCH USE ONLY (RUO). MUST NOT TO BE USED IN DIAGNOSTIC OR THERAPEUTIC APPLICATIONS.**



Confocal imaging of human tonsil using Cytokeratin 4 (KRT4) Rabbit monoclonal antibody (STJ11101221, dilution 1:100) (Red). DAPI was used for nuclear staining (blue). Objective: 40x. Perform high pressure antigen retrieval with 10 mM citrate buffer pH 6.0 before commencing with IF staining protocol.



Immunohistochemistry analysis of paraffin-embedded human lung squamous carcinoma tissue using Cytokeratin 4 (KRT4) (KRT4) Rabbit monoclonal antibody (STJ11101221) at dilution of 1:100 (40x lens). Perform microwave antigen retrieval with 10 mM Tris/EDTA buffer pH 9.0 before commencing with immunohistochemistry staining protocol.



Western blot analysis of extracts of various cell lines, using Cytokeratin 4 (KRT4) (KRT4) Rabbit monoclonal antibody (STJ11101221) at 1:1000 dilution. Secondary antibody: HRP Goat Anti-Rabbit IgG (H+L) (STJS000856) at 1:10000 dilution. Lysates/proteins: 25 Mu g per lane. Blocking buffer: 3% nonfat dry milk in TBST. Detection: ECL Basic Kit. Exposure time: 30s.