

Anti-ADAMTS7 antibody (1600-1686) (STJ11101204)

GENERAL INFORMATION

Product Type	Primary antibodies
Applications	WB/ELISA
Host / Source	Rabbit
Reactivity	Human

PRODUCT PROPERTIES

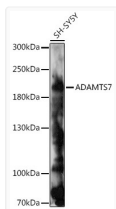
Clonality	Polyclonal
Concentration	Lot specific
Conjugation	Unconjugated
Purification	Affinity purification
Dilution Range	WB:1:500-1:2000 ELISA:Recommended starting concentration is 1 µg/mL. Please optimize the concentration based on your specific assay requirements.
Formulation	PBS with 0.01% Thimerosal, 50% Glycerol, pH 7.3.
Isotype	IgG
Molecular Weight	Protein Mw: 184kDa Observed Mw: 200kDa
Storage Instruction	Store at -20°C for up to 1 year from the date of receipt, and avoid repeat freeze-thaw cycles.

TARGET INFORMATION

Gene ID	11173
Gene Symbol	ADAMTS7
UniProt ID	ATS7_HUMAN
Immunogen Region	1600-1686
Immunogen Sequence	QTGLPEEDSDQCGHEAWPES SRPCGTEDCEPVEPPRCERD RLSFGFCETLRLGRCQLPT IRTQCCRSCSPPSHGAPSRG HQRVARR
Specificity	A synthetic peptide corresponding to a sequence within amino acids 1600-1686 of human ADAMTS7 (NP_055087.2).

ADDITIONAL INFORMATION

Note STRICTLY FOR FURTHER SCIENTIFIC RESEARCH USE ONLY (RUO). MUST NOT TO BE USED IN DIAGNOSTIC OR THERAPEUTIC APPLICATIONS.



Western blot analysis of lysates from SH-SY5Y cells, using ADAMTS7 Rabbit polyclonal antibody (STJ11101204) at 1:1000 dilution. Secondary antibody: HRP Goat Anti-Rabbit IgG (H+L) (STJS000856) at 1:10000 dilution. Lysates/proteins: 25 µg per lane. Blocking buffer: 3% nonfat dry milk in TBST. Detection: ECL Enhanced Kit. Exposure time: 5min.