

Anti-PPP1R15A antibody (375-674) (STJ11101176)

GENERAL INFORMATION

Product Type	Primary antibodies
Applications	WB/IF/ICC/ELISA
Host / Source	Rabbit
Reactivity	Human/Mouse/Rat

PRODUCT PROPERTIES

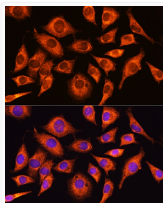
Clonality	Polyclonal
Concentration	Lot specific
Conjugation	Unconjugated
Purification	Affinity purification
Dilution Range	WB:1:500-1:2000 IF/CC:1:50-1:200 ELISA:Recommended starting concentration is 1 μ g/mL. Please optimize the concentration based on your specific assay requirements.
Formulation	PBS with 0.01% Thimerosal, 50% Glycerol, pH 7.3.
Isotype	IgG
Molecular Weight	Protein Mw: 73kDa Observed Mw: 110kDa
Storage Instruction	Store at -20°C for up to 1 year from the date of receipt, and avoid repeat freeze-thaw cycles.

TARGET INFORMATION

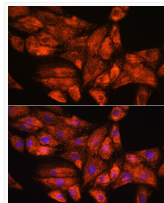
Gene ID	23645
Gene Symbol	PPP1R15A
UniProt ID	PR15A_HUMAN
Immunogen Region	375-674
Immunogen Sequence	ASSSTPATGVFLKSWVYQPG EDTEEEDESDTGS AEDER EAETSASTPPASAFKAWVY RPGEDTEEEDEVDSEDK E DDSEALGEAESDPHSPD QRAHFRGWGYRPGKETEEEE AAEDWGAEPCPFRVAIYVP GEKPPPPWAPPRLPLRLQRR LKRPEPTHTDPPETPLKAR KVRFSKVTVHFLAVWAGPA QAARQGPWEQLARDRSRFAR RITQAQEELSPCLTPAARA
Specificity	Recombinant fusion protein containing a sequence corresponding to amino acids 375-674 of human PPP1R15A (NP_055145.3).

ADDITIONAL INFORMATION

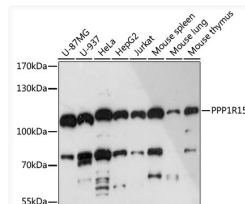
Note STRICTLY FOR FURTHER SCIENTIFIC RESEARCH USE ONLY (RUO). MUST NOT TO BE USED IN DIAGNOSTIC OR THERAPEUTIC APPLICATIONS.



Immunofluorescence analysis of L929 cells using PPP1R15A Rabbit polyclonal antibody (STJ11101176) at dilution of 1:100. Secondary antibody: Cy3 Goat Anti-Rabbit IgG (H+L) at 1:500 dilution. Blue: DAPI for nuclear staining.



Immunofluorescence analysis of H9C2 cells using PPP1R15A Rabbit polyclonal antibody (STJ11101176) at dilution of 1:100. Secondary antibody: Cy3 Goat Anti-Rabbit IgG (H+L) at 1:500 dilution. Blue: DAPI for nuclear staining.



Western blot analysis of various lysates using PPP1R15A Rabbit polyclonal antibody (STJ11101176) at 1:3000 dilution. Secondary antibody: HRP Goat Anti-Rabbit IgG (H+L) (STJS000856) at 1:10000 dilution. Lysates/proteins: 25 μ g per lane. Blocking buffer: 3% nonfat dry milk in TBST. Detection: ECL Basic Kit. Exposure time: 90s.