

Anti-MAPKAPK2 antibody (300-400) (STJ11101167)

GENERAL INFORMATION

Product Type	Primary antibodies
Applications	WB/ELISA
Host / Source	Rabbit
Reactivity	Rat

PRODUCT PROPERTIES

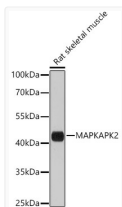
Clonality	Polyclonal
Concentration	Lot specific
Conjugation	Unconjugated
Purification	Affinity purification
Dilution Range	WB:1:500-1:2000 ELISA:Recommended starting concentration is 1 Mu g/mL. Please optimize the concentration based on your specific assay requirements.
Formulation	PBS with 0.01% Thimerosal, 50% Glycerol, pH 7.3.
Isotype	IgG
Molecular Weight	Protein Mw: 46kDa Observed Mw: 45kDa
Storage Instruction	Store at -20°C for up to 1 year from the date of receipt, and avoid repeat freeze-thaw cycles.

TARGET INFORMATION

Gene ID	9261
Gene Symbol	MAPKAPK2
UniProt ID	MAPK2_HUMAN
Immunogen Region	300-400
Immunogen Sequence	MLIRNLLKTEPTQRMITIEF MNHPWIMQSTKVPTPLHTS RVLKEDKERWEDVKEEMTSA LATMRVDYEQIKIKKIEDAS NPLLLKRRKKARALEAAAALA H
Specificity	A synthetic peptide corresponding to a sequence within amino acids 300-400 of human MAPKAPK-2/MK2 (NP_116584.2).

ADDITIONAL INFORMATION

Note STRICTLY FOR FURTHER SCIENTIFIC RESEARCH USE ONLY (RUO). MUST NOT TO BE USED IN DIAGNOSTIC OR THERAPEUTIC APPLICATIONS.



Western blot analysis of lysates from Rat skeletal muscle, using MAPKAPK-2/MK2 Rabbit polyclonal antibody (STJ11101167) at 1:1000 dilution. Secondary antibody: HRP Goat Anti-Rabbit IgG (H+L) (STJS000856) at 1:10000 dilution. Lysates/proteins: 25 Mu g per lane. Blocking buffer: 3% nonfat dry milk in TBST. Detection: ECL Basic Kit. Exposure time: 120s.