

Anti-TRIM31 antibody (186-425) (STJ11101162)

GENERAL INFORMATION

Product Type	Primary antibodies
Applications	WB/IF/ICC/ELISA
Host / Source	Rabbit
Reactivity	Human/Mouse

PRODUCT PROPERTIES

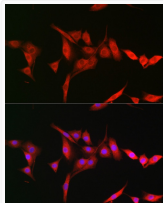
Clonality	Polyclonal
Concentration	Lot specific
Conjugation	Unconjugated
Purification	Affinity purification
Dilution Range	WB:1:500-1:2000 IF/CC:1:50-1:200 ELISA:Recommended starting concentration is 1 Mu g/mL. Please optimize the concentration based on your specific assay requirements.
Formulation	PBS with 0.02% Sodium Azide, 50% Glycerol, pH 7.3.
Isotype	IgG
Molecular Weight	Protein Mw: 48kDa Observed Mw: 48kDa
Storage Instruction	Store at -20°C for up to 1 year from the date of receipt, and avoid repeat freeze-thaw cycles.

TARGET INFORMATION

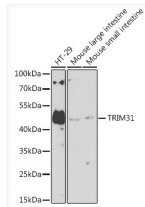
Gene ID	11074
Gene Symbol	TRIM31
UniProt ID	TRI31_HUMAN
Immunogen Region	186-425
Immunogen Sequence	ELLHQVLEEEKNFLLSRIYW LGHEGTEAGKHYVASTEPQL NDLKKLVDSLKTKQNMPPRQ LLEDIKVVLCSRSEEFQFLNP TPVPLELEKLEKLEAKSRHDS ITGSLKFKDQLQADRKKDE NRRFFKSMNKNDMKSWGLLQK NNHKMNKTSEPGSSAGGRT TSGPPNHHSSAPSHSLFRAS SAGKVTFPVCLLASYSDEISG QGASSQDTKTFDVALSEELH AALSEWLTAIRAWFCEVPS
Specificity	Recombinant fusion protein containing a sequence corresponding to amino acids 186-425 of human TRIM31 (NP_008959.3).

ADDITIONAL INFORMATION

Note STRICTLY FOR FURTHER SCIENTIFIC RESEARCH USE ONLY (RUO). MUST NOT TO BE USED IN DIAGNOSTIC OR THERAPEUTIC APPLICATIONS.



Immunofluorescence analysis of NIH-3T3 cells using TRIM31 Rabbit polyclonal antibody (STJ11101162) at dilution of 1:200 (40x lens). Secondary antibody: Cy3 Goat Anti-Rabbit IgG (H+L) at 1:500 dilution. Blue: DAPI for nuclear staining.



Western blot analysis of various lysates using TRIM31 Rabbit polyclonal antibody (STJ11101162) at 1:1000 dilution. Secondary antibody: HRP Goat Anti-Rabbit IgG (H+L) (STJS000856) at 1:10000 dilution. Lysates/proteins: 25 Mu g per lane. Blocking buffer: 3% nonfat dry milk in TBST. Detection: ECL Basic Kit. Exposure time: 60s.