

Anti-Phospho-EZR/RDX/MSN-T567/T564/T558 antibody (STJ11101155)

GENERAL INFORMATION

Product Type	Primary antibodies
Applications	WB/ELISA
Host / Source	Rabbit
Reactivity	Human/Rat

PRODUCT PROPERTIES

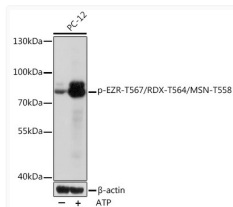
Clonality	Polyclonal
Concentration	Lot specific
Conjugation	Unconjugated
Purification	Affinity purification
Dilution Range	WB:1:500-1:2000 ELISA:Recommended starting concentration is 1 µg/mL. Please optimize the concentration based on your specific assay requirements.
Formulation	PBS with 0.01% Thimerosal, 50% Glycerol, pH 7.3.
Isotype	IgG
Molecular Weight	80kDa
Storage Instruction	Store at -20°C for up to 1 year from the date of receipt, and avoid repeat freeze-thaw cycles.

TARGET INFORMATION

Gene ID	7430 4478 5962 EZR MSN
UniProt ID	EZRI_HUMAN MOES_HUMAN RADI_HUMAN
Immunogen Sequence	YKTLR
Specificity	A synthetic phosphorylated peptide around T567 of human EZR/RDX/MSNEZR (NP_003370.2).

ADDITIONAL INFORMATION

Note STRICTLY FOR FURTHER SCIENTIFIC RESEARCH USE ONLY (RUO). MUST NOT TO BE USED IN DIAGNOSTIC OR THERAPEUTIC APPLICATIONS.



Western blot analysis of lysates from PC-12 cells, using Phospho-EZR-T567/RDX-T564/MSN-T558 Rabbit pAb (STJ11101155) at 1:1000 dilution. PC-12 cells were treated by ATP (5 mM) at 30 °C for 1 hour.

Secondary antibody: HRP-conjugated Goat anti-Rabbit IgG (H+L) (STJS000856) at 1:10000 dilution.

Lysates/proteins: 25 µg per lane.

Blocking buffer: 3% BSA.

Detection: ECL Basic Kit

Exposure time: 10s.