

## Anti-Phospho-MAPT-Ser198/Ser199/Ser202 antibody (STJ11101130)

### GENERAL INFORMATION

Product Type	Primary antibodies
Applications	WB/ELISA
Host / Source	Rabbit
Reactivity	Human/Mouse/Rat

### PRODUCT PROPERTIES

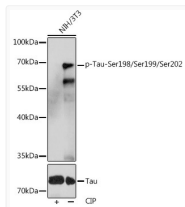
Clonality	Polyclonal
Concentration	Lot specific
Conjugation	Unconjugated
Purification	Affinity purification
Dilution Range	WB:1:500-1:2000 ELISA:Recommended starting concentration is 1 µg/mL. Please optimize the concentration based on your specific assay requirements.
Formulation	PBS with 0.05% Proclin300, 50% Glycerol, pH 7.3.
Isotype	IgG
Molecular Weight	Protein Mw: 79kDa Observed Mw: 70kDa
Storage Instruction	Store at -20°C for up to 1 year from the date of receipt, and avoid repeat freeze-thaw cycles.

### TARGET INFORMATION

Gene ID	<a href="#">4137</a>
Gene Symbol	<a href="#">MAPT</a>
UniProt ID	<a href="#">TAU_HUMAN</a>
Immunogen Sequence	MAEPRQEFVEMDHAGTYGL GDRKDQGGYTMHQDQEGDTD AGLKESPLQTPTEDEGSEEPG SETSDAKSTPTAEDVTAPLV DEGAPGKQAAAQPHTEIPEG TTAEEAGIGDTPSLEDEAAG HVTQEPESGKVVQEGFLREP GPPGLSHQLMSGMPGAPLLP EGPREATRQPSGTGPEDETEG GRHAPPELLKHQLLGDHLHQEG PPLKGAGGKERPGSKEEVDE DRDVEDESSPQDSPPSKASP
Specificity	A synthetic phosphorylated peptide around S198 & S199 & S202 of human Tau (NP_001190181.1).

### ADDITIONAL INFORMATION

Note STRICTLY FOR FURTHER SCIENTIFIC RESEARCH USE ONLY (RUO). MUST NOT TO BE USED IN DIAGNOSTIC OR THERAPEUTIC APPLICATIONS.



Western blot analysis of lysates from NIH/3T3 cells, using Phospho-Tau-Ser198/Ser199/Ser202 pAb (STJ11101130) at 1:1000 dilution or Tau antibody (STJ24499). NIH/3T3 cells were treated by CIP (20µL/400µl) at 37 °C for 1 hour. Secondary antibody: HRP-conjugated Goat anti-Rabbit IgG (H+L) (STJS000856) at 1:10000 dilution.  
 Lysates/proteins: 25 µg per lane.  
 Blocking buffer: 3% BSA.  
 Detection: ECL Basic Kit  
 Exposure time: 120s.