

Anti-Phospho-DLG2-Y340 antibody (STJ11101118)

GENERAL INFORMATION

Product Type	Primary antibodies
Applications	WB/ELISA
Host / Source	Rabbit
Reactivity	Human/Mouse/Rat

PRODUCT PROPERTIES

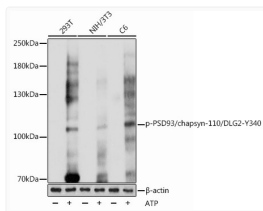
Clonality	Polyclonal
Concentration	Lot specific
Conjugation	Unconjugated
Purification	Affinity purification
Dilution Range	WB:1:500-1:2000 ELISA:Recommended starting concentration is 1 Mu g/mL. Please optimize the concentration based on your specific assay requirements.
Formulation	PBS with 0.01% Thimerosal, 50% Glycerol, pH 7.3.
Isotype	IgG
Molecular Weight	Protein Mw: 98kDa Observed Mw: 105kDa
Storage Instruction	Store at -20°C for up to 1 year from the date of receipt, and avoid repeat freeze-thaw cycles.

TARGET INFORMATION

Gene ID	1740
Gene Symbol	DLG2
UniProt ID	DLG2_HUMAN
Immunogen Sequence	DDYTR
Specificity	A synthetic phosphorylated peptide around Y340 of human PSD93/chapsyn-110/DLG2 (NP_001355.2).

ADDITIONAL INFORMATION

Note STRICTLY FOR FURTHER SCIENTIFIC RESEARCH USE ONLY (RUO). MUST NOT TO BE USED IN DIAGNOSTIC OR THERAPEUTIC APPLICATIONS.



Western blot analysis of various lysates using Phospho-PSD93/chapsyn-110/DLG2-Y340 Rabbit pAb (STJ11101118) at 1:1000 dilution. 293T cells were treated by ATP (5 mM) at 30 °C for 1 hour. NIH/3T3 cells were treated by ATP (5 mM) at 30 °C for 1 hour. C6 cells were treated by ATP (5 mM) at 30 °C for 1 hour. Secondary antibody: HRP-conjugated Goat anti-Rabbit IgG (H+L) (STJS000856) at 1:10000 dilution. Lysates/proteins: 25 Mu g per lane. Blocking buffer: 3% BSA. Detection: ECL Basic Kit. Exposure time: 1s.