

## Anti-Phospho-AKT1/AKT2/AKT3-S473/S474/S472 antibody (STJ11101106)

### GENERAL INFORMATION

|               |                    |
|---------------|--------------------|
| Product Type  | Primary antibodies |
| Applications  | WB/IHC-P/ELISA     |
| Host / Source | Rabbit             |
| Reactivity    | Human/Mouse/Rat    |

### PRODUCT PROPERTIES

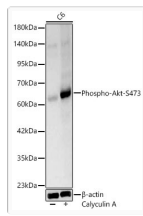
|                     |  |
|---------------------|--|
| Clonality           | Polyclonal   |
| Concentration       | Lot specific   |
| Conjugation         | Unconjugated   |
| Purification        | Affinity purification  |
| Dilution Range      | WB:1:500-1:2000<br>IHC-P:1:50-1:200<br>ELISA:Recommended starting concentration is 1 Mu g/mL. Please optimize the concentration based on your specific assay requirements. |
| Formulation         | PBS with 0.05% Proclin300, 50% Glycerol, pH 7.3.   |
| Isotype             | IgG  |
| Molecular Weight    | Protein Mw: 48kDa/55kDa/51kDa/54kDa<br>Observed Mw: 60kDa  |
| Storage Instruction | Store at -20°C for up to 1 year from the date of receipt, and avoid repeat freeze-thaw cycles.   |

### TARGET INFORMATION

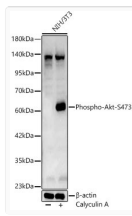
|                    |   |
|--------------------|---|
| Gene ID            | <a href="#">207</a><br><a href="#">10000</a><br><a href="#">208</a><br><a href="#">AKT1</a><br><a href="#">AKT3</a><br><a href="#">AKT1_HUMAN</a><br><a href="#">AKT3_HUMAN</a><br><a href="#">AKT2_HUMAN</a> |
| Immunogen Sequence | QFSYS   |
| Specificity        | A synthetic phosphorylated peptide around S473 of human AKT1/AKT2/AKT3AKT1 (NP_005154.2).   |

### ADDITIONAL INFORMATION

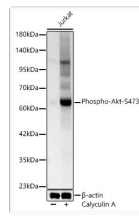
|      |   |
|------|---|
| Note | STRICTLY FOR FURTHER SCIENTIFIC RESEARCH USE ONLY (RUO). MUST NOT TO BE USED IN DIAGNOSTIC OR THERAPEUTIC APPLICATIONS. |
|------|---|



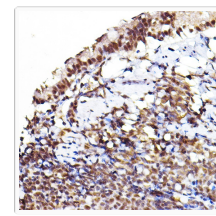
Western blot analysis of lysates from C6 cells using Phospho-Akt-S473 Rabbit pAb (STJ11101106) at 1:500 dilution. C6 cells were treated by Calyculin A (100 nM) at 37 °C for 30 minutes after serum-starvation overnight. Secondary antibody: HRP-conjugated Goat anti-Rabbit IgG (H+L) (STJS000856) at 1:10000 dilution. Lysates/proteins: 25 Mu g per lane. Blocking buffer: 3% nonfat dry milk in TBST. Detection: ECL Basic Kit Exposure time: 10s.



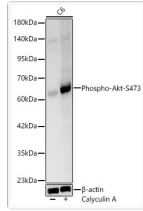
Western blot analysis of lysates from NIH/3T3 cells using Phospho-Akt-S473 Rabbit pAb (STJ11101106) at 1:500 dilution. NIH/3T3 cells were treated by Calyculin A (100 nM) at 37 °C for 30 minutes after serum-starvation overnight. Secondary antibody: HRP-conjugated Goat anti-Rabbit IgG (H+L) (STJS000856) at 1:10000 dilution. Lysates/proteins: 25 Mu g per lane. Blocking buffer: 3% nonfat dry milk in TBST. Detection: ECL Basic Kit Exposure time: 45s.



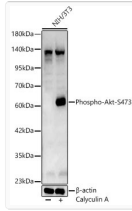
Western blot analysis of lysates from Jurkat cells using Phospho-Akt-S473 Rabbit pAb (STJ11101106) at 1:500 dilution. Jurkat cells were treated by Calyculin A (100 nM) at 37 °C for 30 minutes after serum-starvation overnight. Secondary antibody: HRP-conjugated Goat anti-Rabbit IgG (H+L) (STJS000856) at 1:10000 dilution. Lysates/proteins: 25 Mu g per lane. Blocking buffer: 3% nonfat dry milk in TBST. Detection: ECL Basic Kit Exposure time: 10s.



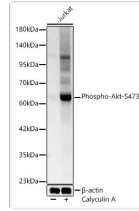
Immunohistochemistry analysis of paraffin-embedded Rat lung using Phospho-AKT1-S473+AKT2-S474+AKT3-S472 Rabbit pAb (STJ11101106) at dilution of 1:100 (40x lens). High pressure antigen retrieval performed with 0.01M Citrate Buffer (pH 6.0) prior to immunohistochemistry staining.



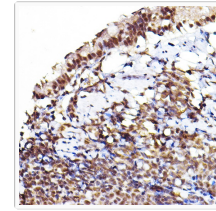
Western blot analysis of lysates from C6 cells using Phospho-Akt-S473 Rabbit pAb (STJ11101106) at 1:500 dilution. C6 cells were treated by Calyculin A (100 nM) at 37 °C for 30 minutes after serum-starvation overnight. Secondary antibody: HRP-conjugated Goat anti-Rabbit IgG (H+L) (STJS000856) at 1:10000 dilution. Lysates/proteins: 25 Mu g per lane. Blocking buffer: 3% nonfat dry milk in TBST. Detection: ECL Basic Kit Exposure time: 10s.



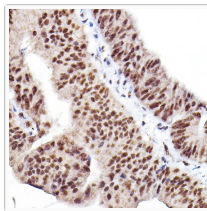
Western blot analysis of lysates from NIH/3T3 cells using Phospho-Akt-S473 Rabbit pAb (STJ11101106) at 1:500 dilution. NIH/3T3 cells were treated by Calyculin A (100 nM) at 37 °C for 30 minutes after serum-starvation overnight. Secondary antibody: HRP-conjugated Goat anti-Rabbit IgG (H+L) (STJS000856) at 1:10000 dilution. Lysates/proteins: 25 Mu g per lane. Blocking buffer: 3% nonfat dry milk in TBST. Detection: ECL Basic Kit Exposure time: 45s.



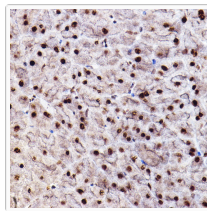
Western blot analysis of lysates from Jurkat cells using Phospho-Akt-S473 Rabbit pAb (STJ11101106) at 1:500 dilution. Jurkat cells were treated by Calyculin A (100 nM) at 37 °C for 30 minutes after serum-starvation overnight. Secondary antibody: HRP-conjugated Goat anti-Rabbit IgG (H+L) (STJS000856) at 1:10000 dilution. Lysates/proteins: 25 Mu g per lane. Blocking buffer: 3% nonfat dry milk in TBST. Detection: ECL Basic Kit Exposure time: 10s.



Immunohistochemistry analysis of paraffin-embedded Rat lung using Phospho-AKT1-S473+AKT2-S474+AKT3-S472 Rabbit pAb (STJ11101106) at dilution of 1:100 (40x lens). High pressure antigen retrieval performed with 0.01M Citrate Buffer (pH 6.0) prior to immunohistochemistry staining.



Immunohistochemistry analysis of paraffin-embedded Human colon carcinoma using Phospho-AKT1-S473+AKT2-S474+AKT3-S472 Rabbit pAb (STJ11101106) at dilution of 1:100 (40x lens). High pressure antigen retrieval performed with 0.01M Citrate Buffer (pH 6.0) prior to immunohistochemistry staining.



Immunohistochemistry analysis of paraffin-embedded Mouse pancreas using Phospho-AKT1-S473+AKT2-S474+AKT3-S472 Rabbit pAb (STJ11101106) at dilution of 1:100 (40x lens). High pressure antigen retrieval performed with 0.01M Citrate Buffer (pH 6.0) prior to immunohistochemistry staining.