

Anti-Pan-Phospho-Serine/Threonine antibody [S5MM] (STJ11101105)

GENERAL INFORMATION

Product Type	Primary antibodies
Applications	WB/IHC-P/ELISA
Host / Source	Mouse
Reactivity	Human/Mouse/Rat/Other

PRODUCT PROPERTIES

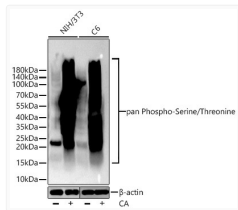
Clonality	Monoclonal
Concentration	Lot specific
Conjugation	Unconjugated
Purification	Affinity purification
Dilution Range	WB:1:500-1:1000 IHC-P:1:1000-1:5000 ELISA:Recommended starting concentration is 1 Mu g/mL. Please optimize the concentration based on your specific assay requirements.
Formulation	PBS with 0.09% Sodium Azide, 50% Glycerol, pH 7.3.
Isotype	IgG2bk
Molecular Weight	> 10kDa
Storage Instruction	Store at -20°C for up to 1 year from the date of receipt, and avoid repeat freeze-thaw cycles.

TARGET INFORMATION

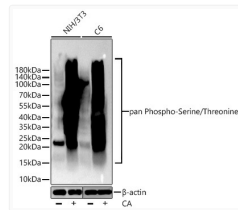
Specificity	A synthetic peptide corresponding to a sequence containing phosphorylated Serine/Threonine.
-------------	---

ADDITIONAL INFORMATION

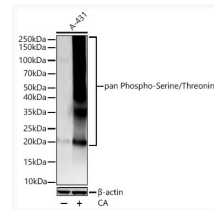
Note **STRICTLY FOR FURTHER SCIENTIFIC RESEARCH USE ONLY (RUO). MUST NOT TO BE USED IN DIAGNOSTIC OR THERAPEUTIC APPLICATIONS.**



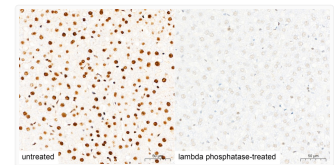
Western blot analysis of lysates from A-431 cells using pan Phospho-Serine/Threonine Mouse mAb (STJ11101105) at 1:1000 dilution incubated overnight at 4 °C. A-431 cells were treated by Calyculin A (50 nM) at 37 °C for 30 minutes after serum-starvation overnight.
Secondary antibody: HRP-conjugated Goat anti-Mouse IgG (H+L) (STJS000854) at 1:10000 dilution.
Lysates/proteins: 30 Mu g per lane.
Blocking buffer: 3 % nonfat dry milk in TBST.
Detection: ECL Basic Kit
Exposure time: 60s.



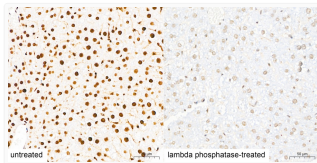
Western blot analysis of various lysates using pan Phospho-Serine/Threonine Mouse mAb (STJ11101105) at 1:4000 dilution incubated at room temperature for 1.5 hours. NIH/3T3 and C6 cells were treated by Calyculin A (100 nM) at 37C for 30 minutes after serum-starvation overnight.
Secondary antibody: HRP-conjugated Goat anti-Mouse IgG (H+L) (STJS000854) at 1:10000 dilution.
Lysates/proteins: 30 Mu g per lane.
Blocking buffer: 3% nonfat dry milk in TBST.
Detection: ECL Basic Kit
Exposure time: 60s.



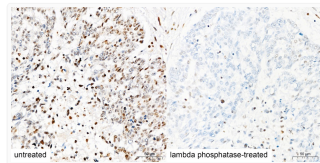
Western blot analysis of lysates from A-431 cells using pan Phospho-Serine/Threonine Mouse mAb (STJ11101105) at 1:4000 dilution incubated at room temperature for 1.5 hours. A431 cells were treated by Calyculin A (100 nM) at 37C for 30 minutes after serum-starvation overnight.
Secondary antibody: HRP-conjugated Goat anti-Mouse IgG (H+L) (STJS000854) at 1:10000 dilution.
Lysates/proteins: 30 Mu g per lane.
Blocking buffer: 3 % nonfat dry milk in TBST.
Detection: ECL Basic Kit
Exposure time: 20s.



Immunohistochemistry analysis of paraffin-embedded Rat liver tissue, untreated (left) and lambda phosphatase-treated (right) , using pan Phospho-Serine/Threonine Mouse mAb (STJ11101105) at a dilution of 1:2000 (40x lens). High pressure antigen retrieval performed with 0.01M Citrate Buffer (pH 6.0) prior to immunohistochemistry staining.



Immunohistochemistry analysis of paraffin-embedded Mouse liver tissue, untreated (left) and lambda phosphatase-treated (right) , using pan Phospho-Serine/Threonine Mouse mAb (STJ11101105) at a dilution of 1:2000 (40x lens). High pressure antigen retrieval performed with 0.01M Citrate Buffer (pH 6.0) prior to immunohistochemistry staining.



Immunohistochemistry analysis of paraffin-embedded Human lung cancer tissue, untreated (left) and lambda phosphatase-treated (right) , using pan Phospho-Serine/Threonine Mouse mAb (STJ11101105) at a dilution of 1:2000 (40x lens). High pressure antigen retrieval performed with 0.01M Citrate Buffer (pH 6.0) prior to immunohistochemistry staining.