

Anti-Phospho-MCL1-T163 antibody (STJ11101076)

GENERAL INFORMATION

Product Type	Primary antibodies
Applications	WB/ELISA
Host / Source	Rabbit
Reactivity	Human/Mouse

PRODUCT PROPERTIES

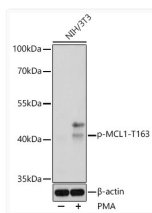
Clonality	Polyclonal
Concentration	Lot specific
Conjugation	Unconjugated
Purification	Affinity purification
Dilution Range	WB:1:500-1:2000 ELISA:Recommended starting concentration is 1 Mu g/mL. Please optimize the concentration based on your specific assay requirements.
Formulation	PBS with 0.01% Thimerosal, 50% Glycerol, pH 7.3.
Isotype	IgG
Molecular Weight	Protein Mw: 37kDa Observed Mw: 41kDa
Storage Instruction	Store at -20°C for up to 1 year from the date of receipt, and avoid repeat freeze-thaw cycles.

TARGET INFORMATION

Gene ID	4170
Gene Symbol	MCL1
UniProt ID	MCL1_HUMAN
Immunogen Sequence	PSTPP
Specificity	A synthetic phosphorylated peptide around T163 of human MCL1 (NP_068779.1).

ADDITIONAL INFORMATION

Note STRICTLY FOR FURTHER SCIENTIFIC RESEARCH USE ONLY (RUO). MUST NOT TO BE USED IN DIAGNOSTIC OR THERAPEUTIC APPLICATIONS.



Western blot analysis of lysates from NIH/3T3 cells, using Phospho-MCL1-T163 Rabbit pAb (STJ11101076) at 1:1000 dilution. NIH/3T3 cells were treated by PMA (80 nM) for overnight.
 Secondary antibody: HRP-conjugated Goat anti-Rabbit IgG (H+L) (STJS000856) at 1:10000 dilution.
 Lysates/proteins: 25 Mu g per lane.
 Blocking buffer: 3% BSA.
 Detection: ECL Basic Kit
 Exposure time: 30s.