

Anti-Phospho-SMO-S616 antibody (STJ11101072)

GENERAL INFORMATION

| | |
|---------------|--------------------|
| Product Type | Primary antibodies |
| Applications | WB/DB/ELISA |
| Host / Source | Rabbit |
| Reactivity | Human |

PRODUCT PROPERTIES

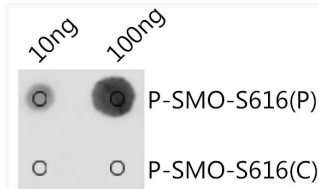
| | |
|---------------------|---------------------------------------------------------------------------------------------------------------------------------------------------------------------------|
| Clonality | Polyclonal |
| Concentration | Lot specific |
| Conjugation | Unconjugated |
| Purification | Affinity purification |
| Dilution Range | WB:1:500-1:1000 DB:1:500-1:1000 ELISA:Recommended starting concentration is 1 Mu g/mL. Please optimize the concentration based on your specific assay requirements. |
| Formulation | PBS with 0.01% Thimerosal, 50% Glycerol, pH 7.3. |
| Isotype | IgG |
| Molecular Weight | Protein Mw: 86kDa Observed Mw: Refer to figures |
| Storage Instruction | Store at -20°C for up to 1 year from the date of receipt, and avoid repeat freeze-thaw cycles. |

TARGET INFORMATION

| | |
|--------------------|----------------------------------------------------------------------------|
| Gene ID | 6608 |
| Gene Symbol | SMO |
| UniProt ID | SMO_HUMAN |
| Immunogen Sequence | VSSAW |
| Specificity | A synthetic phosphorylated peptide around S616 of human SMO (NP_005622.1). |

ADDITIONAL INFORMATION

Note STRICTLY FOR FURTHER SCIENTIFIC RESEARCH USE ONLY (RUO). MUST NOT TO BE USED IN DIAGNOSTIC OR THERAPEUTIC APPLICATIONS.



Dot-blot analysis of all sorts of peptides using Phospho-SMO-S616 antibody (STJ11101072) at 1:1000 dilution.
 Exposure time: 1s.