

Anti-Phospho-Histone H3-S10/T11 antibody (STJ11101033)

GENERAL INFORMATION

Product Type	Primary antibodies
Applications	WB/IHC-P/IF/ICC/ELISA
Host / Source	Rabbit
Reactivity	Human/Mouse/Rat/Other

PRODUCT PROPERTIES

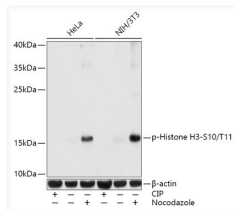
Clonality	Polyclonal
Concentration	Lot specific
Conjugation	Unconjugated
Purification	Affinity purification
Dilution Range	WB:1:500-1:2000 IHC-P:1:50-1:200 IF/CC:1:50-1:200 ELISA:Recommended starting concentration is 1 Mu g/mL. Please optimize the concentration based on your specific assay requirements.
Formulation	PBS with 0.09% Sodium Azide, 50% Glycerol, pH7.3.
Isotype	IgG
Molecular Weight	Protein Mw: 15kDa Observed Mw: 17kDa
Storage Instruction	Store at -20°C for up to 1 year from the date of receipt, and avoid repeat freeze-thaw cycles.

TARGET INFORMATION

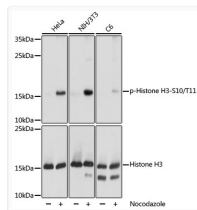
Gene ID	8290 8350/8351/8352/8353/8354/8355/8356/8357/8358/8968
Gene Symbol	H3-4 H3C1.H3C2.H3C3.H3C4.H3C6.
UniProt ID	H31T_HUMAN H31_HUMAN
Immunogen Sequence	KSTGG
Specificity	A synthetic phosphorylated peptide around S10 & T11 of human Histone H3 (NP_003520.1).

ADDITIONAL INFORMATION

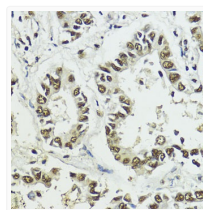
Note STRICTLY FOR FURTHER SCIENTIFIC RESEARCH USE ONLY (RUO). MUST NOT TO BE USED IN DIAGNOSTIC OR THERAPEUTIC APPLICATIONS.



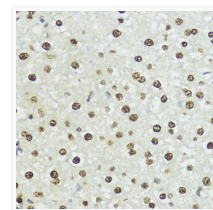
Western blot analysis of various lysates using Phospho-Histone H3-S10/T11 Rabbit pAb (STJ11101033) at 1:1000 dilution. Both NIH/3T3 cells and HeLa cells were treated by CIP (20uL/400ul) at 37 °C for 1 hour and treated by nocodazole (50 ng/mL) at 37 °C for 20 hours. Secondary antibody: HRP-conjugated Goat anti-Rabbit IgG (H+L) (STJS000856) at 1:10000 dilution. Lysates/proteins: 25 Mu g per lane. Blocking buffer: 3% BSA. Detection: ECL Basic Kit Exposure time: 1s.



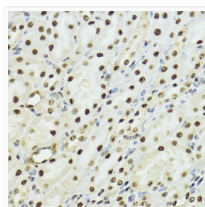
Western blot analysis of lysates from NIH/3T3 cells, using Phospho-Histone H3-S10/T11 Rabbit pAb (STJ254871). HeLa, NIH/3T3 and C6 cells were treated by nocodazole (50 ng/mL) at 37 °C for 20 hours. Secondary antibody: HRP-conjugated Goat anti-Rabbit IgG (H+L) (STJS000856) at 1:10000 dilution. Lysates/proteins: 25 Mu g per lane. Blocking buffer: 3% BSA. Detection: ECL Basic Kit Exposure time: 1s.



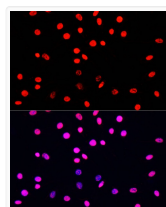
Immunohistochemistry analysis of paraffin-embedded Human lung cancer using Phospho-Histone H3-S10/T11 Rabbit pAb (STJ11101033) at dilution of 1:100 (40x lens). Microwave antigen retrieval performed with 0. 01M Tris/EDTA Buffer (pH 9. 0) prior to immunohistochemistry staining.



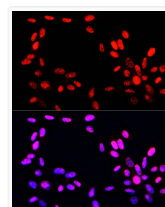
Immunohistochemistry analysis of paraffin-embedded Rat liver using Phospho-Histone H3-S10/T11 Rabbit pAb (STJ11101033) at dilution of 1:100 (40x lens). Microwave antigen retrieval performed with 0. 01M Tris/EDTA Buffer (pH 9. 0) prior to immunohistochemistry staining.



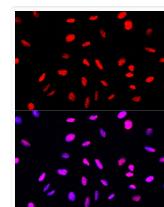
Immunohistochemistry analysis of paraffin-embedded Mouse kidney using Phospho-Histone H3-S10/T11 Rabbit pAb (STJ11101033) at dilution of 1:100 (40x lens). Microwave antigen retrieval performed with 0. 01M Tris/EDTA Buffer (pH 9. 0) prior to immunohistochemistry staining.



Immunofluorescence analysis of C6 cells using Phospho-Histone H3-S10/T11 Rabbit pAb (STJ11101033) at dilution of 100 (40x lens). Secondary antibody: Cy3-conjugated Goat anti-Rabbit IgG (H+L) (STJS001166) at 1:500 dilution. Blue: DAPI for nuclear staining.



Immunofluorescence analysis of NIH-3T3 cells using Phospho-Histone H3-S10/T11 Rabbit pAb (STJ11101033) at dilution of 100 (40x lens). Secondary antibody: Cy3-conjugated Goat anti-Rabbit IgG (H+L) (STJS001166) at 1:500 dilution. Blue: DAPI for nuclear staining.



Immunofluorescence analysis of U-2 OS cells using Phospho-Histone H3-S10/T11 Rabbit pAb (STJ11101033) at dilution of 100 (40x lens). Secondary antibody: Cy3-conjugated Goat anti-Rabbit IgG (H+L) (STJS001166) at 1:500 dilution. Blue: DAPI for nuclear staining.