

Anti-Phospho-FoxO1/FoxO3a/FoxO4-T24/T32/T28 antibody (STJ11101029)

GENERAL INFORMATION

Product Type	Primary antibodies
Applications	WB/IHC-P/ELISA
Host / Source	Rabbit
Reactivity	Human/Mouse/Rat

PRODUCT PROPERTIES

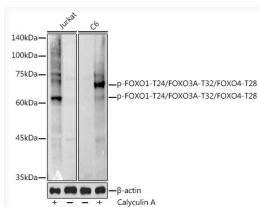
Clonality	Polyclonal
Concentration	Lot specific
Conjugation	Unconjugated
Purification	Affinity purification
Dilution Range	WB:1:100-1:500 IHC-P:1:50-1:200 ELISA:Recommended starting concentration is 1 Mu g/mL. Please optimize the concentration based on your specific assay requirements.
Formulation	PBS with 0.05% Proclin300, 50% Glycerol, pH 7.3.
Isotype	IgG
Molecular Weight	65kDa/73kDa
Storage Instruction	Store at -20°C for up to 1 year from the date of receipt, and avoid repeat freeze-thaw cycles.

TARGET INFORMATION

Gene ID	2309 2308
Gene Symbol	FOXO3 FOXO1
UniProt ID	FOXO3_HUMAN FOXO1_HUMAN
Immunogen Sequence	SCTWP
Specificity	A synthetic phosphorylated peptide around T24 of human FOXO1/FOXO3A/FOXO4FOXO1 (NP_002006.2).

ADDITIONAL INFORMATION

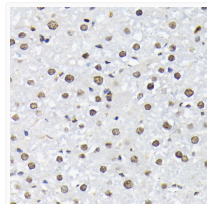
Note STRICTLY FOR FURTHER SCIENTIFIC RESEARCH USE ONLY (RUO). MUST NOT TO BE USED IN DIAGNOSTIC OR THERAPEUTIC APPLICATIONS.



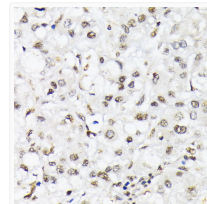
Western blot analysis of various lysates using Phospho-FOXO1-T24/FOXO3A-T32/FOXO4-T28 Rabbit pAb (STJ11101029) at 1:500 dilution. Jurkat cells were treated by Calyculin A (100 nM) at 37 °C for 30 minutes.

Secondary antibody: HRP-conjugated Goat anti-Rabbit IgG (H+L) (STJS000856) at 1:10000 dilution.

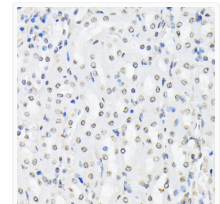
Lysates/proteins: 25 Mu g per lane.
Blocking buffer: 3% nonfat dry milk in TBST.
Detection: ECL Basic Kit
Exposure time: 30s.



Immunohistochemistry analysis of paraffin-embedded Rat liver using Phospho-FOXO1-T24/FOXO3A-T32/FOXO4-T28 Rabbit pAb (STJ11101029) at dilution of 1:200 (40x lens). Microwave antigen retrieval performed with 0.01M Tris/EDTA Buffer (pH 9.0) prior to immunohistochemistry staining.



Immunohistochemistry analysis of paraffin-embedded Human liver cancer using Phospho-FOXO1-T24/FOXO3A-T32/FOXO4-T28 Rabbit pAb (STJ11101029) at dilution of 1:200 (40x lens). Microwave antigen retrieval performed with 0.01M Tris/EDTA Buffer (pH 9.0) prior to immunohistochemistry staining.



Immunohistochemistry analysis of paraffin-embedded Mouse kidney using Phospho-FOXO1-T24/FOXO3A-T32/FOXO4-T28 Rabbit pAb (STJ11101029) at dilution of 1:200 (40x lens). Microwave antigen retrieval performed with 0.01M Tris/EDTA Buffer (pH 9.0) prior to immunohistochemistry staining.