

Anti-Phospho-TP53-S392 antibody (STJ11101001)

GENERAL INFORMATION

Product Type	Primary antibodies
Applications	WB/ELISA
Host / Source	Rabbit
Reactivity	Human/Mouse/Rat

PRODUCT PROPERTIES

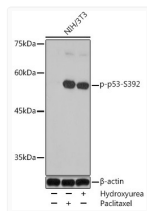
Clonality	Polyclonal
Concentration	Lot specific
Conjugation	Unconjugated
Purification	Affinity purification
Dilution Range	WB:1:500-1:2000 ELISA:Recommended starting concentration is 1 Mu g/mL. Please optimize the concentration based on your specific assay requirements.
Formulation	PBS with 0.01% Thimerosal, 50% Glycerol, pH 7.3.
Isotype	IgG
Molecular Weight	Protein Mw: 44kDa Observed Mw: 53kDa
Storage Instruction	Store at -20°C for up to 1 year from the date of receipt, and avoid repeat freeze-thaw cycles.

TARGET INFORMATION

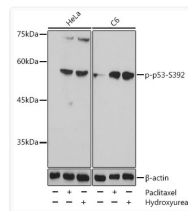
Gene ID	7157
Gene Symbol	TP53
UniProt ID	P53_HUMAN
Immunogen Sequence	GPDS
Specificity	A synthetic phosphorylated peptide around S392 of human p53 (NP_000537.3).

ADDITIONAL INFORMATION

Note **STRICTLY FOR FURTHER SCIENTIFIC RESEARCH USE ONLY (RUO). MUST NOT TO BE USED IN DIAGNOSTIC OR THERAPEUTIC APPLICATIONS.**



Western blot analysis of lysates from NIH/3T3 cells, using Phospho-p53-S392 Rabbit pAb (STJ11101001) at 1:1000 dilution. NIH/3T3 cells were treated by Paclitaxel (100 nM/ml) at 37 °C for 20 hours. NIH/3T3 cells were treated by Hydroxyurea (4 mM) at 37 °C for 20 hours. Secondary antibody: HRP-conjugated Goat anti-Rabbit IgG (H+L) (STJS000856) at 1:10000 dilution.
 Lysates/proteins: 25 Mu g per lane.
 Blocking buffer: 3% BSA.
 Detection: ECL Enhanced Kit
 Exposure time: 1s.



Western blot analysis of various lysates using Phospho-p53-S392 Rabbit pAb (STJ11101001) at 1:1000 dilution. HeLa cells were treated by Paclitaxel (100 nM/ml) at 37 °C for 20 hours. HeLa cells were treated by Hydroxyurea (4 mM) at 37 °C for 20 hours. C6 cells were treated by Paclitaxel (100 nM) at 37 °C for 20 hours. C6 cells were treated by Hydroxyurea (4 mM) at 37 °C for 20 hours. Secondary antibody: HRP-conjugated Goat anti-Rabbit IgG (H+L) (STJS000856) at 1:10000 dilution.
 Lysates/proteins: 25 Mu g per lane.
 Blocking buffer: 3% BSA.
 Detection: ECL Enhanced Kit
 Exposure time: 20s.