

Anti-Phospho-Histone H3-T3 antibody (STJ11100987)

GENERAL INFORMATION

Product Type	Primary antibodies
Applications	WB/ELISA
Host / Source	Rabbit
Reactivity	Human/Mouse/Rat/Other

PRODUCT PROPERTIES

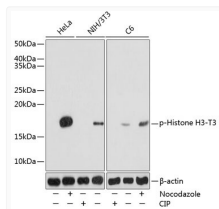
Clonality	Polyclonal
Concentration	Lot specific
Conjugation	Unconjugated
Purification	Affinity purification
Dilution Range	WB:1:500-1:2000 ELISA:Recommended starting concentration is 1 Mu g/mL. Please optimize the concentration based on your specific assay requirements.
Formulation	PBS with 0.01% Thimerosal, 50% Glycerol, pH 7.3.
Isotype	IgG
Molecular Weight	Protein Mw: 15kDa Observed Mw: 17kDa
Storage Instruction	Store at -20°C for up to 1 year from the date of receipt, and avoid repeat freeze-thaw cycles.

TARGET INFORMATION

Gene ID	8350/8351/8352/8353/8354/8355/8356/8357/8358/89688290
Gene Symbol	H3C1.H3C2.H3C3.H3C4.H3C6.H3C7.H3C8.H3C10.H3C11.H3C12 H31_HUMAN H31T_HUMAN
Immunogen Sequence	MARTK
Specificity	A synthetic phosphorylated peptide around T3 of human HIST1H3A (NP_003520.1).

ADDITIONAL INFORMATION

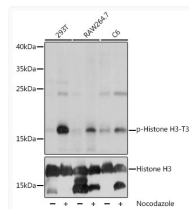
Note STRICTLY FOR FURTHER SCIENTIFIC RESEARCH USE ONLY (RUO). MUST NOT TO BE USED IN DIAGNOSTIC OR THERAPEUTIC APPLICATIONS.



Western blot analysis of various lysates using Phospho-Histone H3-T3 pAb (STJ11100987) at 1:1000 dilution. C6 and HeLa cells were treated by Nocodazole (50 ng/mL) at 37 °C for 20 hours. C6 and NIH/3T3 cells were treated by CIP (20uL/400ul) at 37 °C for 1 hour.

Secondary antibody: HRP-conjugated Goat anti-Rabbit IgG (H+L) (STJS000856) at 1:10000 dilution.

Lysates/proteins: 25 Mu g per lane.
Blocking buffer: 3% nonfat dry milk in TBST.
Detection: ECL Basic Kit
Exposure time: 1s.



Western blot analysis of various lysates using Phospho-Histone H3-T3 pAb (STJ11100987) at 1:1000 dilution or Histone H3 antibody (STJ23980). Both 293T cells and Raw264. 7 cells were treated by Nocodazole (100 ng/mL) at 37 °C for 16 hours. C6 cells were treated by Nocodazole (50 ng/mL) at 37 °C for 20 hours.

Secondary antibody: HRP-conjugated Goat anti-Rabbit IgG (H+L) (STJS000856) at 1:10000 dilution.

Lysates/proteins: 25 Mu g per lane.
Blocking buffer: 3% BSA.
Detection: ECL Basic Kit
Exposure time: 1s.