

Anti-Phospho-Histone H3-S28 antibody (STJ11100980)

GENERAL INFORMATION

Product Type	Primary antibodies
Applications	WB/IF/ICC/ELISA
Host / Source	Rabbit
Reactivity	Human/Mouse/Rat/Other

PRODUCT PROPERTIES

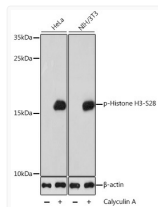
Clonality	Polyclonal
Concentration	Lot specific
Conjugation	Unconjugated
Purification	Affinity purification
Dilution Range	WB:1:500-1:2000 IF/CC:1:50-1:200 ELISA:Recommended starting concentration is 1 Mu g/mL. Please optimize the concentration based on your specific assay requirements.
Formulation	PBS with 0.05% Proclin300, 50% Glycerol, pH 7.3.
Isotype	IgG
Molecular Weight	Protein Mw: 16kDa Observed Mw: 17kDa
Storage Instruction	Store at -20°C for up to 1 year from the date of receipt, and avoid repeat freeze-thaw cycles.

TARGET INFORMATION

Gene ID	8290 8350/8351/8352/8353/8354/8355/8356/8357/8358/8968
Gene Symbol	H3-4 H3C1.H3C2.H3C3.H3C4.H3C6.
UniProt ID	H31T_HUMAN H31_HUMAN
Immunogen Sequence	ARKSA
Specificity	A synthetic phosphorylated peptide around S28 of human Histone H3 (NP_003520.1).

ADDITIONAL INFORMATION

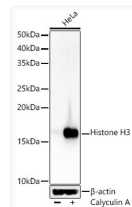
Note **STRICTLY FOR FURTHER SCIENTIFIC RESEARCH USE ONLY (RUO). MUST NOT TO BE USED IN DIAGNOSTIC OR THERAPEUTIC APPLICATIONS.**



Western blot analysis of various lysates using Phospho-Histone H3-S28 Rabbit pAb (STJ11100980) at 1:1000 dilution. Both HeLa cells and NIH/3T3 cells were treated by Calyculin A (100 nM) at 37 °C for 30 minutes after serum-starvation overnight.

Secondary antibody: HRP-conjugated Goat anti-Rabbit IgG (H+L) (STJS000856) at 1:10000 dilution.

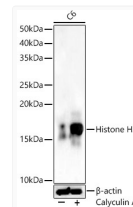
Lysates/proteins: 25 Mu g per lane.
Blocking buffer: 3% BSA.
Detection: ECL Basic Kit
Exposure time: 1s.



Western blot analysis of lysates from HeLa cells, using Phospho-Histone H3-S28 Rabbit pAb (STJ11100980) at 1:900 dilution. HeLa cells were treated by Calyculin A (100 nM) at 37 °C for 30 minutes after serum-starvation overnight.

Secondary antibody: HRP-conjugated Goat anti-Rabbit IgG (H+L) (STJS000856) at 1:10000 dilution.

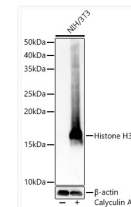
Lysates/proteins: 25 Mu g per lane.
Blocking buffer: 3% nonfat dry milk in TBST.
Detection: ECL Basic Kit
Exposure time: 10s.



Western blot analysis of lysates from C6 cells, using Phospho-Histone H3-S28 Rabbit pAb (STJ11100980) at 1:900 dilution. C6 cells were treated by Calyculin A (100 nM) at 37 °C for 30 minutes after serum-starvation overnight.

Secondary antibody: HRP-conjugated Goat anti-Rabbit IgG (H+L) (STJS000856) at 1:10000 dilution.

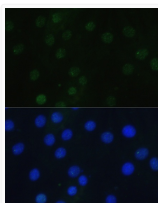
Lysates/proteins: 25 Mu g per lane.
Blocking buffer: 3% nonfat dry milk in TBST.
Detection: ECL Basic Kit
Exposure time: 10s.



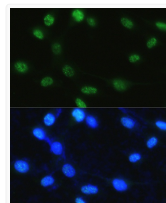
Western blot analysis of lysates from NIH/3T3 cells, using Phospho-Histone H3-S28 Rabbit pAb (STJ11100980) at 1:900 dilution. NIH/3T3 cells were treated by Calyculin A (100 nM) at 37 °C for 30 minutes after serum-starvation overnight.

Secondary antibody: HRP-conjugated Goat anti-Rabbit IgG (H+L) (STJS000856) at 1:10000 dilution.

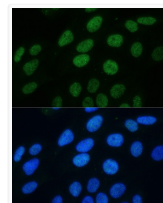
Lysates/proteins: 25 Mu g per lane.
Blocking buffer: 3% nonfat dry milk in TBST.
Detection: ECL Basic Kit
Exposure time: 0.5s.



Immunofluorescence analysis of H9C2 cells using Phospho-Histone H3-S28 Rabbit pAb (STJ11100980) at dilution of 1:100. Blue: DAPI for nuclear staining.



Immunofluorescence analysis of NIH/3T3 cells using Phospho-Histone H3-S28 Rabbit pAb (STJ11100980) at dilution of 1:100. Blue: DAPI for nuclear staining.



Immunofluorescence analysis of U2OS cells using Phospho-Histone H3-S28 Rabbit pAb (STJ11100980) at dilution of 1:100. Blue: DAPI for nuclear staining.