

Anti-Phospho-CHEK2-S516 antibody (STJ11100971)

GENERAL INFORMATION

| | |
|---------------|--------------------|
| Product Type | Primary antibodies |
| Applications | WB/ELISA |
| Host / Source | Rabbit |
| Reactivity | Human/Mouse/Rat |

PRODUCT PROPERTIES

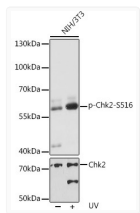
| | |
|---------------------|--|
| Clonality | Polyclonal |
| Concentration | Lot specific |
| Conjugation | Unconjugated |
| Purification | Affinity purification |
| Dilution Range | WB:1:500-1:2000 ELISA:Recommended starting concentration is 1 Mu g/mL. Please optimize the concentration based on your specific assay requirements. |
| Formulation | PBS with 0.01% Thimerosal, 50% Glycerol, pH 7.3. |
| Isotype | IgG |
| Molecular Weight | Protein Mw: 61kDa Observed Mw: 62kDa |
| Storage Instruction | Store at -20°C for up to 1 year from the date of receipt, and avoid repeat freeze-thaw cycles. |

TARGET INFORMATION

| | |
|--------------------|---|
| Gene ID | 11200 |
| Gene Symbol | CHEK2 |
| UniProt ID | CHK2_HUMAN |
| Immunogen Sequence | QPSTS |
| Specificity | A synthetic phosphorylated peptide around S516 of human Chk2 (NP_009125.1). |

ADDITIONAL INFORMATION

Note **STRICTLY FOR FURTHER SCIENTIFIC RESEARCH USE ONLY (RUO). MUST NOT TO BE USED IN DIAGNOSTIC OR THERAPEUTIC APPLICATIONS.**



Western blot analysis of lysates from NIH/3T3 cells, using Phospho-Chk2-S516 Rabbit pAb (STJ114888). NIH/3T3 cells were treated by UV at room temperature for 15-30 minutes.
 Secondary antibody: HRP-conjugated Goat anti-Rabbit IgG (H+L) (STJS000856) at 1:10000 dilution.
 Lysates/proteins: 25 Mu g per lane.
 Blocking buffer: 3% BSA.
 Detection: ECL Basic Kit
 Exposure time: 10s.