

## Anti-Phospho-NTRK1-Y490 antibody (STJ11100963)

### GENERAL INFORMATION

Product Type	Primary antibodies
Applications	WB/ELISA
Host / Source	Rabbit
Reactivity	Human/Mouse/Rat

### PRODUCT PROPERTIES

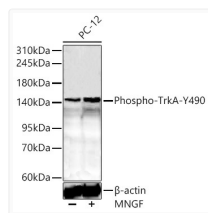
Clonality	Polyclonal
Concentration	Lot specific
Conjugation	Unconjugated
Purification	Affinity purification
Dilution Range	WB:1:500-1:2000 ELISA:Recommended starting concentration is 1 Mu g/mL. Please optimize the concentration based on your specific assay requirements.
Formulation	PBS with 0.02% Sodium Azide, 50% Glycerol, pH 7.3.
Isotype	IgG
Molecular Weight	Protein Mw: 87kDa Observed Mw: 150kDa/140kDa
Storage Instruction	Store at -20°C for up to 1 year from the date of receipt, and avoid repeat freeze-thaw cycles.

### TARGET INFORMATION

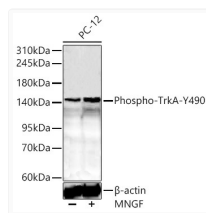
Gene ID	<a href="#">4914</a>
Gene Symbol	<a href="#">NTRK1</a>
UniProt ID	<a href="#">NTRK1_HUMAN</a>
Immunogen Sequence	HIIEN
Specificity	A synthetic phosphorylated peptide around Y490 of human TrkA (NP_001012331.1).

### ADDITIONAL INFORMATION

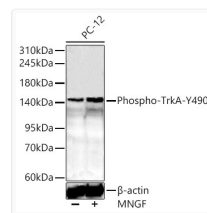
Note **STRICTLY FOR FURTHER SCIENTIFIC RESEARCH USE ONLY (RUO). MUST NOT TO BE USED IN DIAGNOSTIC OR THERAPEUTIC APPLICATIONS.**



Western blot analysis of lysates from NIH3T3 cells, using Phospho-TrkA-Y490 Rabbit pAb (STJ11100963).  
 Secondary antibody: HRP-conjugated Goat anti-Rabbit IgG (H+L) (STJS000856) at 1:10000 dilution.  
 Lysates/proteins: 25 Mu g per lane.  
 Blocking buffer: 3% BSA.



Western blot analysis of lysates from NIH3T3 cells, using Phospho-TrkA-Y490 Rabbit pAb (STJ11100963).  
 Secondary antibody: HRP Goat Anti-Rabbit IgG (H+L) (STJS000856) at 1:10000 dilution.  
 Lysates/proteins: 25 Mu g per lane.  
 Blocking buffer: 3% BSA.



Western blot analysis of lysates from PC-12 cells using Phospho-TrkA-Y490 Rabbit pAb (STJ11100963) at 1:1800 dilution. PC-12 cells were treated by MNGF (200 ng/ml) at 37C for 10 minutes after serum-starvation overnight.  
 Secondary antibody:HRP Goat Anti-Rabbit IgG (H+L) (STJS000856) at 1:10000 dilution.  
 Lysates/proteins: 30 Mu g per lane.  
 Blocking buffer: 3% nonfat dry milk in TBST.  
 Detection:ECL Basic Kit  
 Exposure time: 90s.