

## Anti-SLC5A7 antibody (503-580) (STJ11100952)

### GENERAL INFORMATION

Product Type	Primary antibodies
Applications	WB/IF/ICC/ELISA
Host / Source	Rabbit
Reactivity	Human/Mouse/Rat

### PRODUCT PROPERTIES

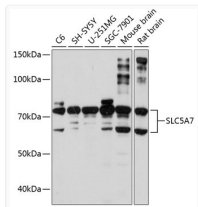
Clonality	Polyclonal
Concentration	Lot specific
Conjugation	Unconjugated
Purification	Affinity purification
Dilution Range	WB:1:500-1:2000 IF/CC:1:50-1:200 ELISA:Recommended starting concentration is 1 Mu g/mL. Please optimize the concentration based on your specific assay requirements.
Formulation	PBS with 0.02% Sodium Azide, 50% Glycerol, pH 7.3.
Isotype	IgG
Molecular Weight	Protein Mw: 63kDa Observed Mw: 66-75kDa
Storage Instruction	Store at -20°C for up to 1 year from the date of receipt, and avoid repeat freeze-thaw cycles.

### TARGET INFORMATION

Gene ID	<a href="#">60482</a>
Gene Symbol	<a href="#">SLC5A7</a>
UniProt ID	<a href="#">SC5A7_HUMAN</a>
Immunogen Region	503-580
Immunogen Sequence	ESGTLPPKLDVFDVAVRHSEENMDKTLVKNENIKLDELALVKPRQSM TLSSTFTNKEAFLD V DSSPEGSGTEDNLQ
Specificity	Recombinant fusion protein containing a sequence corresponding to amino acids 503-580 of human SLC5A7 (NP_068587.1).

### ADDITIONAL INFORMATION

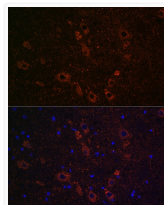
Note STRICTLY FOR FURTHER SCIENTIFIC RESEARCH USE ONLY (RUO). MUST NOT TO BE USED IN DIAGNOSTIC OR THERAPEUTIC APPLICATIONS.



Western blot analysis of various lysates using SLC5A7 Rabbit pAb (STJ11100952) at 1:1000 dilution.

Secondary antibody: HRP-conjugated Goat anti-Rabbit IgG (H+L) (STJS000856) at 1:10000 dilution.

Lysates/proteins: 25 Mu g per lane.  
Blocking buffer: 3% nonfat dry milk in TBST.  
Detection: ECL Basic Kit  
Exposure time: 90s.



Immunofluorescence analysis of paraffin-embedded rat brain using SLC5A7 Rabbit pAb (STJ11100952) at dilution of 1:100 (40x lens).  
Secondary antibody: Cy3-conjugated Goat anti-Rabbit IgG (H+L) (STJS001166) at 1:500 dilution.  
Blue: DAPI for nuclear staining.