

## Anti-STIM1 antibody (530-685) (STJ11100938)

### GENERAL INFORMATION

Product Type	Primary antibodies
Applications	WB/IF/ICC/IP/ELISA
Host / Source	Rabbit
Reactivity	Human/Mouse/Rat

### PRODUCT PROPERTIES

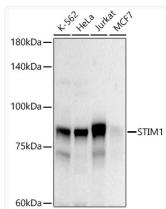
Clonality	Polyclonal
Concentration	Lot specific
Conjugation	Unconjugated
Purification	Affinity purification
Dilution Range	WB:1:500-1:1000 IF/CC:1:50-1:200 IP:0.5 Mu g-4 Mu g antibody for 200 Mu g-400 Mu g extracts of whole cells ELISA:Recommended starting concentration is 1 Mu g/mL. Please optimize the concentration based on your specific assay requirements
Formulation	PBS with 0.05% Proclin300, 50% Glycerol, pH 7.3.
Isotype	IgG
Molecular Weight	Protein Mw: 77kDa Observed Mw: 85kDa
Storage Instruction	Store at -20°C for up to 1 year from the date of receipt, and avoid repeat freeze-thaw cycles.

### TARGET INFORMATION

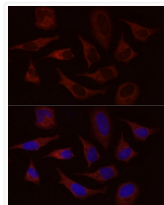
Gene ID	<a href="#">6786</a>
Gene Symbol	<a href="#">STIM1</a>
UniProt ID	<a href="#">STIM1_HUMAN</a>
Immunogen Region	530-685
Immunogen Sequence	RQRVAPKPPQMSRAADEALN AMTSNGSHRLIEGVHPGSLV EKLPDSPALAKKALLALNHG LDKAHSLMELSPSPAPGGSP HLDSSRSHSPSPDPDTPSP VGDSRALQASRNTRIPHLAG KKAAVAEEDNGSIGEETDSSP GRKKFPLKIFKKPLKK
Specificity	Recombinant fusion protein containing a sequence corresponding to amino acids 530-685 of human STIM1 (NP_003147.2).

### ADDITIONAL INFORMATION

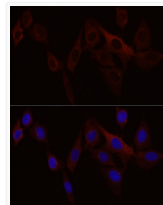
Note STRICTLY FOR FURTHER SCIENTIFIC RESEARCH USE ONLY (RUO). MUST NOT TO BE USED IN DIAGNOSTIC OR THERAPEUTIC APPLICATIONS.



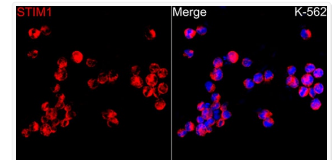
Western blot analysis of extracts of various cell lines, using STIM1 antibody (STJ11100938) at 1:1000 dilution. Secondary antibody: HRP Goat Anti-rabbit IgG (H+L) (STJS000856) at 1:10000 dilution. Lysates/proteins: 25 Mu g per lane. Blocking buffer: 3% non-fat dry milk in TBST. Detection: ECL Basic Kit. Exposure time: 30s.



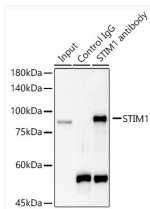
Immunofluorescence analysis of HeLa cells using STIM1 rabbit polyclonal antibody (STJ11100938) at dilution of 1:50 (40x lens). Blue: DAPI for nuclear staining.



Immunofluorescence analysis of NIH/3T3 cells using STIM1 rabbit polyclonal antibody (STJ11100938) at dilution of 1:50 (40x lens). Blue: DAPI for nuclear staining.



Immunofluorescence analysis of K-562 cells using STIM1 rabbit polyclonal antibody (STJ11100938) at dilution of 1:50 (40x lens). Blue: DAPI for nuclear staining.



Immunoprecipitation analysis of 300 Mu g extracts of HeLa cells using 3 Mu g STIM1 antibody (STJ11100938). Western blot was performed from the immunoprecipitate using STIM1 (STJ11100938) at a dilution of 1:1000.