

Anti-CLOCK antibody (450-600) (STJ11100916)

GENERAL INFORMATION

Product Type	Primary antibodies
Applications	WB/ELISA
Host / Source	Rabbit
Reactivity	Human/Mouse/Rat

PRODUCT PROPERTIES

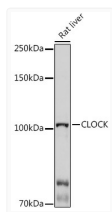
Clonality	Polyclonal
Concentration	Lot specific
Conjugation	Unconjugated
Purification	Affinity purification
Dilution Range	WB:1:500-1:2000 ELISA:Recommended starting concentration is 1 µg/mL. Please optimize the concentration based on your specific assay requirements.
Formulation	PBS with 0.01% Thimerosal, 50% Glycerol, pH 7.3.
Isotype	IgG
Molecular Weight	Protein Mw: 95kDa Observed Mw: 110kDa
Storage Instruction	Store at -20°C for up to 1 year from the date of receipt, and avoid repeat freeze-thaw cycles.

TARGET INFORMATION

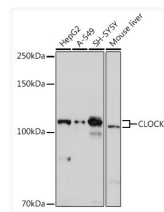
Gene ID	9575
Gene Symbol	CLOCK
UniProt ID	CLOCK_HUMAN
Immunogen Region	450-600
Immunogen Sequence	STPTKIPTDTSTPPRQHLPA HEKVMVQRRSSFSSQSINSQS VGSSSLTQPVMSQATNLPQP GMSQFQFSAQLGAMQHLKDDQ LEQRTRMIEANIHRQQEELR KIQEQLQMVHGQGLQMFLLQQ SNPGLNFGSVQLSSGNSSNI QQLAPINMQGQ
Specificity	Recombinant fusion protein containing a sequence corresponding to amino acids 450-600 of human CLOCK (NP_004889.1).

ADDITIONAL INFORMATION

Note STRICTLY FOR FURTHER SCIENTIFIC RESEARCH USE ONLY (RUO). MUST NOT TO BE USED IN DIAGNOSTIC OR THERAPEUTIC APPLICATIONS.



Western blot analysis of lysates from Rat liver, using CLOCK Rabbit polyclonal antibody (STJ11100916) at 1:1000 dilution. Secondary antibody: HRP Goat Anti-Rabbit IgG (H+L) (STJS000856) at 1:10000 dilution. Lysates/proteins: 25 µg per lane. Blocking buffer: 3% nonfat dry milk in TBST. Detection: ECL Basic Kit. Exposure time: 3min.



Western blot analysis of various lysates using CLOCK Rabbit polyclonal antibody (STJ11100916) at 1:1000 dilution. Secondary antibody: HRP Goat Anti-Rabbit IgG (H+L) (STJS000856) at 1:10000 dilution. Lysates/proteins: 25 µg per lane. Blocking buffer: 3% nonfat dry milk in TBST. Detection: ECL Basic Kit. Exposure time: 30s.