

## Anti-CSDE1 antibody (369-600) (STJ11100877)

### GENERAL INFORMATION

Product Type	Primary antibodies
Applications	WB/ELISA
Host / Source	Rabbit
Reactivity	Human/Mouse

### PRODUCT PROPERTIES

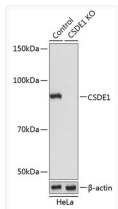
Clonality	Polyclonal
Concentration	Lot specific
Conjugation	Unconjugated
Purification	Affinity purification
Dilution Range	WB:1:500-1:2000 ELISA:Recommended starting concentration is 1 Mu g/mL. Please optimize the concentration based on your specific assay requirements.
Formulation	PBS with 0.01% Thimerosal, 50% Glycerol, pH 7.3.
Isotype	IgG
Molecular Weight	Protein Mw: 89kDa Observed Mw: 89kDa
Storage Instruction	Store at -20°C for up to 1 year from the date of receipt, and avoid repeat freeze-thaw cycles.

### TARGET INFORMATION

Gene ID	<a href="#">7812</a>
Gene Symbol	<a href="#">CSDE1</a>
UniProt ID	<a href="#">CSDE1_HUMAN</a>
Immunogen Region	369-600
Immunogen Sequence	LSAQRNHAIKIKLPKGTVS FHSKSDHRFLGTVKEATFS NPKTTSPNKGKEKEAEDGII AYDDCGVKLTIAFQAKDVEG STSPQIGDKVEFSISDKQRP GQQVATCVRLGRNSNSKRL LGYVATLKDNGFIETANHD KEIFFHYSEFSGDVDSLELG DMVEYSLSKGKGNKVS AEKV NKTHSVNGITEEADPTIYSG KVIRPLRSVDPTQTEYQGM I EIVEEGDMKGEV
Specificity	Recombinant fusion protein containing a sequence corresponding to amino acids 369-600 of human CSDE1 (NP_009089.4).

### ADDITIONAL INFORMATION

Note **STRICTLY FOR FURTHER SCIENTIFIC RESEARCH USE ONLY (RUO). MUST NOT TO BE USED IN DIAGNOSTIC OR THERAPEUTIC APPLICATIONS.**



Western blot analysis of lysates from wild type (WT) and CSDE1 knockout (KO) HeLa cells, using [KO Validated] CSDE1 Rabbit polyclonal antibody (STJ11100877) at 1:1000 dilution. Secondary antibody: HRP Goat Anti-Rabbit IgG (H+L) (STJS000856) at 1:10000 dilution. Lysates/proteins: 25 Mu g per lane. Blocking buffer: 3% nonfat dry milk in TBST. Detection: ECL Basic Kit. Exposure time: 15s.