

Anti-TTLL12 antibody (485-644) (STJ11100870)

GENERAL INFORMATION

Product Type	Primary antibodies
Applications	WB/ELISA
Host / Source	Rabbit
Reactivity	Human/Mouse/Rat

PRODUCT PROPERTIES

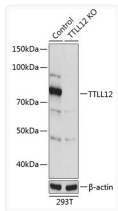
Clonality	Polyclonal
Concentration	Lot specific
Conjugation	Unconjugated
Purification	Affinity purification
Dilution Range	WB:1:500-1:2000 ELISA:Recommended starting concentration is 1 µg/mL. Please optimize the concentration based on your specific assay requirements.
Formulation	PBS with 0.01% Thimerosal, 50% Glycerol, pH 7.3.
Isotype	IgG
Molecular Weight	Protein Mw: 74kDa Observed Mw: 80kDa
Storage Instruction	Store at -20°C for up to 1 year from the date of receipt, and avoid repeat freeze-thaw cycles.

TARGET INFORMATION

Gene ID	23170
Gene Symbol	TTLL12
UniProt ID	TTL12_HUMAN
Immunogen Region	485-644
Immunogen Sequence	LFVYDVFVWLRFSNRAFALND LDDYEKHFVVMNYDPDVVK QVHCEEFIPEFEKQYPEFPW TDVQAEIFRAFTELFQVACA KPPPLGLCDYPSSRAMYAVD LMLKWDNGPDRRVMQPQL EVNFNPDCERACRYHPTFFN DVFSTLFLDQPGGCHVTCLV
Specificity	Recombinant fusion protein containing a sequence corresponding to amino acids 485-644 of human TTLL12 (NP_055955.1).

ADDITIONAL INFORMATION

Note STRICTLY FOR FURTHER SCIENTIFIC RESEARCH USE ONLY (RUO). MUST NOT TO BE USED IN DIAGNOSTIC OR THERAPEUTIC APPLICATIONS.



Western blot analysis of lysates from wild type (WT) and TTLL12 knockout (KO) 293T cells, using [KO Validated] TTLL12 Rabbit polyclonal antibody (STJ11100870) at 1:1000 dilution. Secondary antibody: HRP Goat Anti-Rabbit IgG (H+L) (STJS000856) at 1:10000 dilution. Lysates/proteins: 25 µg per lane. Blocking buffer: 3% nonfat dry milk in TBST. Detection: ECL Basic Kit. Exposure time: 1s.