

## Anti-RCN2 antibody (23-180) (STJ11100819)

### GENERAL INFORMATION

Product Type	Primary antibodies
Applications	WB/ELISA
Host / Source	Rabbit
Reactivity	Human/Mouse/Rat

### PRODUCT PROPERTIES

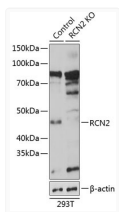
Clonality	Polyclonal
Concentration	Lot specific
Conjugation	Unconjugated
Purification	Affinity purification
Dilution Range	WB:1:500-1:2000 ELISA:Recommended starting concentration is 1 µg/mL. Please optimize the concentration based on your specific assay requirements.
Formulation	PBS with 0.05% Proclin300, 50% Glycerol, pH 7.3.
Isotype	IgG
Molecular Weight	Protein Mw: 37kDa Observed Mw: 47kDa
Storage Instruction	Store at -20°C for up to 1 year from the date of receipt, and avoid repeat freeze-thaw cycles.

### TARGET INFORMATION

Gene ID	<a href="#">5955</a>
Gene Symbol	<a href="#">RCN2</a>
UniProt ID	<a href="#">RCN2_HUMAN</a>
Immunogen Region	23-180
Immunogen Sequence	GKAEELHYPLGERRSYDRE ALLGVQEDVDEYVVLGHEEQ QKRLQAIKKIDLSDGFLT ESELSSWIQMSFKHYAMQEA KQQFVEYDKNSDDTWTWDEY NIQMYDRVIDFDENTALDDA EESFRKLHLKDKRFEKAN QDSGPGLSLEEFIAFEHP
Specificity	Recombinant fusion protein containing a sequence corresponding to amino acids 23-180 of human RCN2 (NP_002893.1).

### ADDITIONAL INFORMATION

Note STRICTLY FOR FURTHER SCIENTIFIC RESEARCH USE ONLY (RUO). MUST NOT TO BE USED IN DIAGNOSTIC OR THERAPEUTIC APPLICATIONS.



Western blot analysis of lysates from wild type (WT) and RCN2 knockout (KO) 293T cells, using [KO Validated] RCN2 Rabbit polyclonal antibody (STJ11100819) at 1:1000 dilution. Secondary antibody: HRP Goat Anti-Rabbit IgG (H+L) (STJS00856) at 1:10000 dilution. Lysates/proteins: 25 µg per lane. Blocking buffer: 3% nonfat dry milk in TBST. Detection: ECL Basic Kit. Exposure time: 1s.