

Anti-ETFA antibody (1-333) (STJ11100813)

GENERAL INFORMATION

Product Type	Primary antibodies
Applications	WB/IF/ICC/ELISA
Host / Source	Rabbit
Reactivity	Human/Mouse/Rat

PRODUCT PROPERTIES

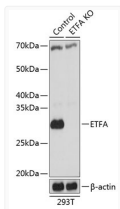
Clonality	Polyclonal
Concentration	Lot specific
Conjugation	Unconjugated
Purification	Affinity purification
Dilution Range	WB:1:500-1:2000 IF/CC:1:50-1:100 ELISA:Recommended starting concentration is 1 Mu g/mL. Please optimize the concentration based on your specific assay requirements.
Formulation	PBS with 0.01% Thimerosal, 50% Glycerol, pH 7.3.
Isotype	IgG
Molecular Weight	Protein Mw: 35kDa Observed Mw: 30kDa
Storage Instruction	Store at -20°C for up to 1 year from the date of receipt, and avoid repeat freeze-thaw cycles.

TARGET INFORMATION

Gene ID	2108
Gene Symbol	ETFA
UniProt ID	ETFA_HUMAN
Immunogen Region	1-333
Immunogen Sequence	MFRAAAPGQLRRAASLLRFQ STLVIAEHANDSLAPITLNT ITAATRLGGGEVSCLVAGTKC DKVAQDLCKVAGIAKVLVAQ HDVYKGLLPEELTPLILATQ KQFNHYTHICAGASAFGKNLL PRVAAKLEVAPISDIIAIKS PDTFVRTIYAGNALCTVKCD EKVKVFSVRGTSFDAAATSG GSASSEKASSTSPVEISEWL DQKLTKSDRPELTGAKVVVS GGRGLKSGENFKLLYDLAD
Specificity	Recombinant fusion protein containing a sequence corresponding to amino acids 1-333 of human ETFA (NP_000117.1).

ADDITIONAL INFORMATION

Note STRICTLY FOR FURTHER SCIENTIFIC RESEARCH USE ONLY (RUO). MUST NOT TO BE USED IN DIAGNOSTIC OR THERAPEUTIC APPLICATIONS.



Western blot analysis of lysates from wild type (WT) and ETFA knockout (KO) 293T cells, using [KO Validated] ETFA Rabbit polyclonal antibody (STJ11100813) at 1:1000 dilution. Secondary antibody: HRP Goat Anti-Rabbit IgG (H+L) (STJS000856) at 1:10000 dilution. Lysates/proteins: 25 Mu g per lane. Blocking buffer: 3% nonfat dry milk in TBST. Detection: ECL Basic Kit. Exposure time: 1s.